



Gamkaberg

NATURE RESERVE

SURVIVAL GUIDE



CapeNature



Welcome

Thank you for choosing **Gamkaberg Nature Reserve** as your preferred destination.

Gamkaberg is an isolated mountain range in the Klein Karoo, lying between the Swartberg and Outeniqua mountains. The Gamkaberg Nature Reserve (10 430ha), a World Heritage Site, is located 33km south-west of Oudtshoorn and 32km south-east of Calitzdorp. It forms part of the 80 000ha Gamkaberg Conservation Area which is made up of various categories of protected areas, including privately owned stewardship nature reserves. Gamkaberg was established in 1974 in order to conserve a local population of endangered Cape mountain zebra and their natural habitat. The terrain is rugged with mountainous plateaux incised by deep ravines.

INSIDE *the* PROPERTY



LOCATION

GPS: 34 40 17.51 S 21 53 18.37 E



ACCOMMODATION

Gamkaberg: where the lion retreated, so humanity might prosper.

- ▶ Tierkloof Eco Eco-Lodge
- ▶ Sweetthorn Eco-Lodge
- ▶ Fossil Ridge Eco-Lodge

Rustic accommodation built from poles and reeds, situated in Sweetthorn thicket at the foot of the Gamkaberg. We take one group at a time, so it's the ideal private getaway for family and friend.

▶ Xami Eco-Lodge

This two-sleeper is a beautifully designed eco-lodge to accommodate special needs guests (disabled friendly).

▶ Gamkaberg Campsites

Gamkaberg offers three campsites, with the first two capable of hosting a maximum of four people per site. The recently built third campsite is specifically designed to accommodate guests with vehicles equipped with rooftop tents and off-road trailers.

▶ Stables

(max 8 people) this is the ideal spot if you don't want the hassle of pitching your own tent!

▶ Oukraal

This remote site at the top of the mountain plateau is a 1.5-hour drive by 4x4. Clients can use the remote overhang as a kitchen and braai area. Oukraal offers guest four herders huts and an enviro-loo toilet on site.



CHECK IN

14h00 - 16h00

Gate Times:

07h30 - 18h00



CHECK OUT

10h00



OFFICE HOURS

07h30 - 16h00

(Mondays - Fridays)



MANAGEMENT

087 288 0373 (Office hours)

072 202 3438 (After hours)





ACCOMMODATION UNITS

► Tierkloof Eco Lodge (sleeps max 8 people)

Rustic accommodation built from thatch and reed situated in Sweetthorn thicket at the foot of the Gamkaberg. We take only one group at a time so it's the ideal private getaway for family and friends. The main lapa consists of a kitchen/dining room and a living area with a wood stove for cold winter nights. - There are four safari-style tents pitched on desks; one tent has a king-size bed, one tent has a double bed and two tents have two single beds each. The lodge boasts an eco-splash pool with a shaded deck, lapa, braai area, and hammocks. **Bring your own pool towels** and come and soak up the peace!

- Bedding provided: Yes
- Towels provided: Yes
- Amenities provided: Yes (shower gel and shampoo).
- Electricity: Solar and gas
- Kitchen equipped: Appliances are gas
- Braai facilities: Outside with grid available
- Bathroom equipped: Hot water showers
- Disabled access: Yes (only with assistance)

► FOSSIL RIDGE ECO LODGE (sleep max 4 people)

Rustic accommodation built from poles & reed situated next to the fossil rich ridge at the foot of the Gamkaberg. We take only one group at a time so it's the ideal private getaway for family and friends. The main lapa consists of a kitchen/dining room and a living area. There are two safari style tents pitched on decks, with two single beds in one and double bed - in the other. The lodge boasts an eco-splash pool, deck, lapa and braai area. Bring your own pool towels and come and soak up the peace!

- Bedding provided: Yes
- Fridge: Yes solar
- Towels provided: Yes
- Electricity: Solar and gas
- Kitchen equipped: Appliances are gas
- Braai facilities: Outside with grid available
- Bathroom equipped: Hot water showers and one Enviro-Loo waterless toilet and one flushing toilet.
- Disabled access: No

► SWEETTHORN ECO LODGE (sleep max 6 people)

Rustic accommodation built from poles & reed situated in Sweetthorn thicket at the foot of the Gamkaberg. We take only one group at a time so it's the ideal private getaway for family and friends. From here, you can do various day hikes. The main lapa consists of a kitchen/dining room and a living area. There are three safari style tents pitched on decks, two with two single beds and one with a double bed. The lodge boasts an eco-splash pool, shaded deck, lapa and braai area. **Bring your own pool towels** and come and soak up the peace!

- Bedding provided: Yes
- Towels provided: Yes
- Amenities provided: Yes (shower gel and shampoo).
- Electricity: Solar and gas
- Kitchen equipped: Appliances are gas
- Braai facilities: Outside with grid available
- Bathroom equipped: Hot water showers and one Enviro-Loo waterless toilet and one flushing toilet.
- Disabled access: No

► XAMI ECO LODGE (sleeps max 2 people)

This two-sleeper eco lodge is beautifully designed with minimal impact on the natural environment. In addition, it is wheelchair friendly and offers privacy in the bush, with a modern look and feel. All facilities are constructed on one deck which includes: kitchen, bathroom, bedroom, open plan lounge and a braai area and an eco-splash pool on the verandah, with magnificent views of the valleys and mountains of the Klein Karoo. Bring your own pool towels and come and soak up the absolute peace and quiet!

- Bedding provided: Yes
- Towels provided: Yes
- Electricity: Solar and gas
- Kitchen equipped: Cutlery, crockery, pots and pans. Gas hob and solar fridge,kettle.
- Braai facilities: Outside with grid available
- Bathroom equipped: Hot water shower & equipped for wheel chair friendly
- Deck:Lounge chairs, director chairs, table, ceramic fire bowl
- Disabled access: Yes, but only with assistance (carport and ramp for wheelchairs on deck).



CAMPING:

► Oukraal

Please note: Visitors must report to the office before departing for Ou Kraal.

This remote camp on top of the Gamkaberg Plateau is 1,5 hours' drive by 4x4 and 6 hours hike on foot. Oukraal has recently been upgraded, with four new herder's huts and an Enviro-loo toilet on site. Clients can still use the original rock shelter as a kitchen and braai area. Each hut sleeps two hikers in two single beds with mattresses, with a shelf around the interior for bags and belongings. Ou Kraal is an opportunity for hikers, or those with a 4x4, to experience a night in the heart of the Gamkaberg

- **Number of units:** Four. Oukraal sleeps up to 8 people, accommodating two in each hut
- **Electricity:** No
- **Ablution facilities:** Enviro-Loo waterless toilet and a basin.
- **Braai facilities:** Outside, with grid available
- **Disabled access:** No

What we provide:

- Braaigrill (eco-logs provided on request for hikers only)
- Enviro loo (waterless toilet)
- Water tank with rain water (use sparingly)
- Three-legged Pot (No 3)
- Two beds in each Herders hut with mattresses

What you need to bring:

- Warm clothes (temperatures may drop rapidly)
- Drinking water, cutlery to prepare and eat meals
- Bedding and towels
- Torch

Services available at Reserve:

- The reserve office sells eco-logs and charcoal

► STABLES & GAMKABERG CAMPSITE: (max 22 people)

Situated near the office and information centre at the foot of the Gamkaberg overlooking the Klein Karoo Valley and the Swartberg Mountains. From here you can hike various day hikes and the overnight trail.

The stables and campsite accommodation consists of three areas:

- **The Stable:** (max 8 people) Perfect for those who don't want to pitch their own tents! The old horse stables have been converted into two separate rooms, each of which can accommodate 4 people, and each has its own entrance. The stables are rented out to only one group at a time. Between the two rooms is a 'kitchen' area with a table, chairs, enamel crockery and cutlery and a 2-plate gas stove and fridge. There is electricity and water on tap but remember to bring your torches. All beds have mattresses, but you'll need to bring your own bedding. A sheltered lapa/ braai area is situated in front of the stables.
- **Gamkaberg campsites:** (2 sites with max 4 people each). Close to the stables, there are two sheltered areas to pitch your tent. Portable braais are provided to set up your own camping area. The camp area has water on tap.
- **Ablution facilities:** The camp sites and stables share a hot water shower and ablutions facility close to the office that consists of gents and ladies shower and toilets and an outdoor worksurface and zink (about 50m from the site). Additionally, two waterless eco-loos with cold outdoor showers were installed in close range



CAMPING:

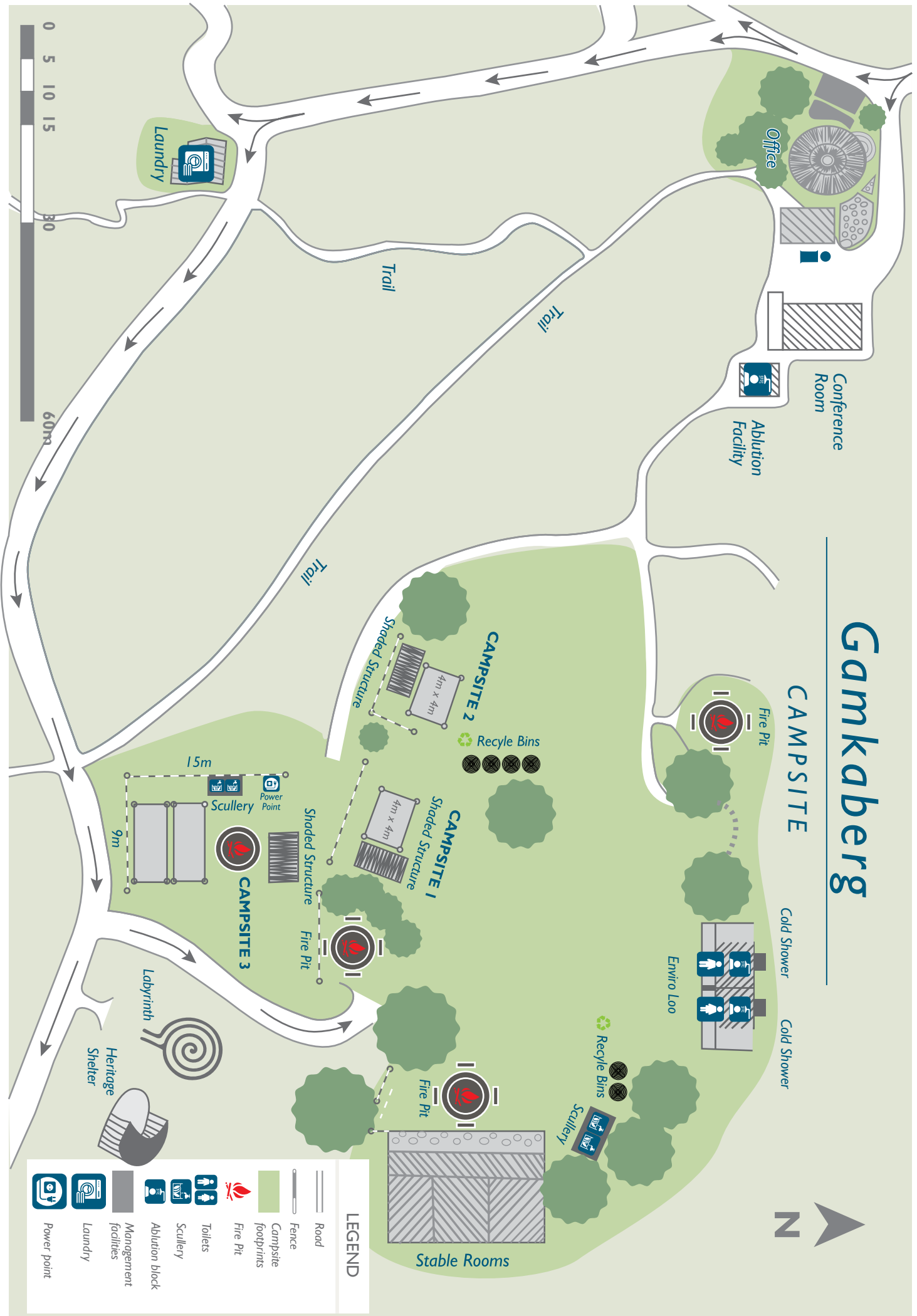
► Campsites: Roof Top Tent vehicles and off Road Trailers.
(6 pax) – 2 vehicles

- In addition to the existing campsites, a new campsite has been built specifically to cater to guests with vehicles equipped with rooftop tents and off-road trailers. The campsite is situated in close proximity to the office and Welcome Centre at the foot of the Gamkaberg, overlooking the Klein Karoo Valley and the Swartberg Mountains. Various day hikes as well as the overnight trail can also be done from here. It is also close to the stables Rooms and the two Campsite areas in which you can pitch your tent. Water is on tap at the camp area. **Please note: The reserve makes use of borehole water at the tourism facilities. Clients are welcome to bring their own water.**
- Eco-friendly waterless toilets with additional two cold outdoor showers are just a few steps away from the Campsite. The campsites and stables share hot water (solar) ablution facility close to the office that consists of gents and ladies shower and flushing toilets. This Campsite has its own fire pit and an outdoor work surface and sink or scullery at the site. The campsite is equipped with a power point for guest to plug in their electrical appliances.
NB: Guests needs to bring their own camping chairs.



Gamkaberg

CAMPSITE



LEGEND	
	Road
	Fence
	Campsite footprint
	Fire Pit
	Shaded area
	Management facilities
	Laundry
	Power point
	Ablution block
	Scullery
	Toilets
	Fire Pit
	Campsite footprint
	Shaded area
	Management facilities
	Laundry
	Power point



HOUSEKEEPING

Use biodegradable cleaning materials and take your refuse away with you.

(PLEASE NOTE: Servicing means change of linen and towels and or refilling compost only, this will only be done if the client permits)



CHECKOUT

Office hours – 07h30 to 16h00.

PLEASE ARRANGE TO BE ON RESERVE BEFORE THE GATE CLOSES AT 18H00:

- The afterhours number is **072 202 3438**.
- The Eco Lodges may be **occupied from 14:00** on the day of arrival and must be **vacated by 10:00** on the day of departure.



SMOKING

All CapeNature properties are non-smoking. Please keep in mind the risk of a wildfire when smoking outside.



TOWELS

Fresh linen and towels will be supplied, but general cleaning is however not included in this service.



FURNITURE

Please be so kind and refrain from moving the furniture around.



BATHROOMS

You are in a water restricted area; at Gamkaberg we make use of bore-hole water! Please use water sparingly.



TRASH LITTERING

Please keep the surrounds and facilities clean by making use of the refuse bins provided.





KITCHEN

Refer to checklist in kitchen.



SECURITY & DOORS

Kindly note that from 20h00 – 07h00 every night there will be a watchman on duty that patrol the reserve for safety and security purpose. The watchmen are based at the office and will do 2 hourly patrol throughout the night.



ELECTRICITY

Do not leave outside lights burning all night.



FIRE

- Please do not take hot coals from the outside braai area into the cottage for use in the fireplace.
- Collection of firewood is not allowed.
- Make sure all fires are extinguished before you leave or go to sleep.
- Only make fires in demarcated areas. The vegetation here is extremely flammable and uncontrolled fires are devastating to the environment and costly to bring under control.



GAMES

Games available at reception. Games can be signed out from reception at the duty officer upon arrival and must be handed in upon guest departure. Guest can now enjoy fun gaming activities for the duration of their stay.

Name of Games:

- Pick Up Sticks & Metal Jack's N Ball x4.
- Playing Cards & Dice x2.
- Double 6 Dominoes
- Ludo
- Snakes and Ladders
- Woordkrabbel - Afrikaans
- Word Scrabble – English
- UNO Cards x 2



LIFE *on the* RESERVE



BIRD WATCHING

An abundance of birds inhabit the Klein Karoo region, and many of them can be found in Gamkaberg Nature Reserve.

Download the Klein Karoo bird list: <https://www.capenature.co.za/uploads/files/Reserves/Maps/Karoo-Birdlist.pdf>



PICNICKING

There is a picnicking area situated under a thatch lapa that is available for day visitors, where you can relax and soak in the unique atmosphere of the Klein Karoo after your hike or 4x4 excursion. A small braai is also available for use.





ROCK CLIMBING

Gamkaberg has recently opened up trad rock climbing at Tierkloof. The site offers good quality, single and two-pitch, trad climbing with easy approaches and descents in beautiful, pristine surroundings. The climbing is on hard quartzitic sandstone similar to Montagu but with many beautiful, vertical finger cracks and corners.

A comprehensive guidebook for climbing at Gamkaberg, compiled by Johann Lanz and Tony Lourens from Blue Mountain, is available: <http://surl.li/infwbv>

Please note that you have to be in possession of a **downloaded guidebook** <http://surl.li/infwbv> or **hard copy**, which is available at the Gamkaberg Nature Reserve office, to be allowed to climb at the reserve. There are also a number of conditions for climbing at Gamkaberg, which **MUST** be adhered to. Conditions for climbing in Tierkloof:

- Rock climbing in Gamkaberg will only be permitted to people who are staying overnight in the reserve. This is to control the number of climbers in the kloof, due to the sensitivity of the area.
- All climbers must check in at the reserve office on arrival, where they will be thoroughly briefed by the duty officer on the rock climbing conditions.
- All climbers must be in possession of a current guidebook, or otherwise will have to purchase one at reception.
- Rock climbing is only permitted within approved areas as laid out in this guidebook. It is the responsibility of each person to ensure that they only climb within these stipulated areas.
- Climbing must be practised according to the 'leave no trace' principle.
- Unless staying at Tierkloof Eco Lodge, climbers are not permitted to park at the start of Tierkloof. This is reserved solely for guests at the Eco Lodge. Please park at the campsite (if you are camping), or at of the lodge where you are staying.
- All climbers are subject to the rules of conduct pertaining to all visitors to Gamkaberg as set out in the conditions of entry, which include no damaging or disturbance of the natural environment, no littering, no fires, and no overnight camping within Tierkloof.
- Climbers must take utmost care to minimise damage to any plants, both on the approach to, and at the base of, climbs (trampling), as well as plants growing on the cliffs.
- All human excrement (including toilet paper) must be wrapped in newspaper (available at reception), then deposited into a carrier bag of sorts and carried out, for disposal in a dedicated facility at the main centre. The reason for this is that due to the narrowness of the kloof and its proximity to the water course, which is utilised as a drinking water source for the Gamkaberg tourists and staff, human waste cannot be left or buried in the kloof as it poses a risk of water contamination.
- Absolutely no bolting is permitted.
- Fixed points, in the form of slings or rope for abseiling from the top of crags, can be installed, but should be kept to a minimum and set up to be out of view.
- Noise levels must be kept to a minimum. Climbers must at all times show respect for the wilderness character of the reserve and to other users wishing to experience the same.
- No climbing, picnicking or storage of equipment is permitted in close proximity to any rock art or archaeological site.
- Certain crags or parts of crags may be temporarily closed for nesting birds, as is done in other climbing locations such as Silvermine in Cape Town. Such closure dates will be available at the reserve office together with the current guidebook of approved climbing areas.
- Climbers are permitted to stow their gear in the kloof overnight if returning to the crags the following day.
- All climbers must return to camp before dark each day in order to sign a register with the duty official. This is for the safety of the climbers as well as to control access.
- Failure to comply with any of the conditions set out above will be in breach of the MOU and could lead to climbing being disallowed in future.



TRAILS

The hiking trails on offer at Gamkaberg give you the chance to experience spectacular viewpoints and the natural tranquillity of the reserve. Hikers have several options including the overnight Tierkloof Hiking Trail and should be prepared for some rough terrain. When hiking at Gamkaberg, always be prepared for unpredictable weather as the area experiences high temperatures in summer and gets very cold in winter.

Trail Preparation: Do not hike alone. Wear comfortable walking shoes, sunscreen and a hat. Make sure to carry sufficient food, water and take along your binoculars. Permits are to be purchased via CapeNature Central Reservations or reserve office. In winter, a raincoat/pancho is advised.

► Guarrie Trail

- Trail distance: *0.7km*
- Estimated time: *20 min*
- This short trail takes one through the lowland succulent karoo vegetation. The 20 most common and interesting plant species are demarcated for ID purposes and interpretation is provided in the info brochure.

► Spekboom Trail

- Trail distance: *1.3km*
- Estimated time: *30 min*
- This trail branches off the Guarrie trail and takes you higher up onto the foothills into the spekboomveld. It offers a wonderful view of the Klein Karoo vlaktes as well as the Swartberg Range in the distance. The 20 most common and interesting plant species are demarcated.

► Mousebird Trail

- Trail distance: *2.5km*
- Estimated time: *1.5hrs*
- This trail takes you mainly through the sweet thorn thicket along the valley bottom. It's a great trail for observing the wide variety of bush birds which occur on Gamkaberg. (Bird list provided in the info brochure). The 20 most common and interesting plant species are demarcated.

► Pied Barbet

- Trail distance: *4.1km*
- Estimated time: *2.5hrs*
- Acacia Pied Barbets are often seen and heard along this trail. It branches off from the Mousebird trail and continues further up in the sweet thorn thicket along the valley bottom. Returning at a higher level through the spekboom veld it allows one a view over the sweet thorn treetops. Also great for birding and offering a glimpse into the Tierkloof Ravine where the real wilderness starts.
- An option is to branch off into the Tierkloof for a kilometre or two, as your time or fitness levels dictate, just to experience the change in surroundings as the high cliffs on either side with forest vegetation in the valley bottom makes an appearance. Just turn back and join up with the Pied Barbet trail when you have taken in the pristine views.

► To Overhang and Back

- Trail distance: *14.4km*
- Estimated time: *6hrs*
- This trail is highly recommended for those with a bit of extra time and fitness levels. It covers the two longer day trails (Mousebird and Pied Barbet) as well as the continuing deep into the Tierkloof which has remnants of evergreen forest vegetation below spectacular sheer sandstone cliffs all along the way. At the overhang you can have a picnic and a rest while looking over the dense vegetation further up the ravine before turning around to complete the route back to the start at the info centre.



MULTI-DAY HIKES

► Tierkloof Hiking Trail Day 1

- Trail distance: 13.2km
- Estimated time: 8hrs

► Tierkloof Hiking Trail Day 2

- Trail distance: 11.6km
- Estimated time: 7hrs
- Starting in succulent karoo, this is a moderately strenuous trail taking hikers through a deep, forested ravine to a fynbos-rich mountain plateau. Here they overnight at the remote Oukraal camp and enjoy spectacular views of the Swartberg and Outeniqua mountain ranges.

► 4x4 Trail

The **Zebra Crossing 4x4 Route** takes you on the Gamkaberg sector mainly through upland fynbos and renosterveld and offers you a chance to see rare Cape Mountain Zebra in its natural habitat. The route covers a large and rugged section of the reserve, taking you to and from spectacular viewpoints more than 1000m above the Little Karoo.

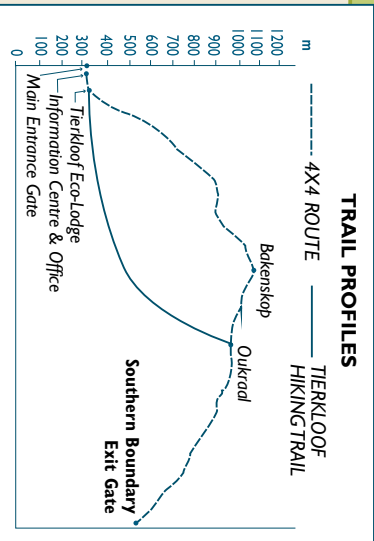
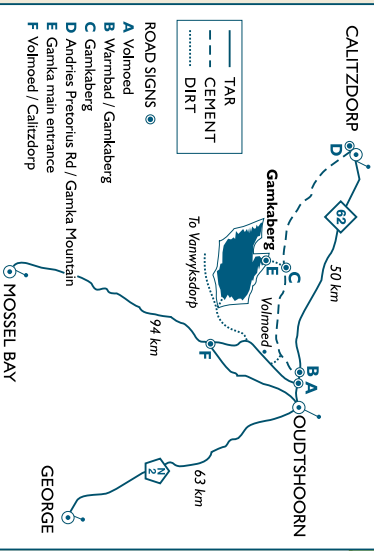
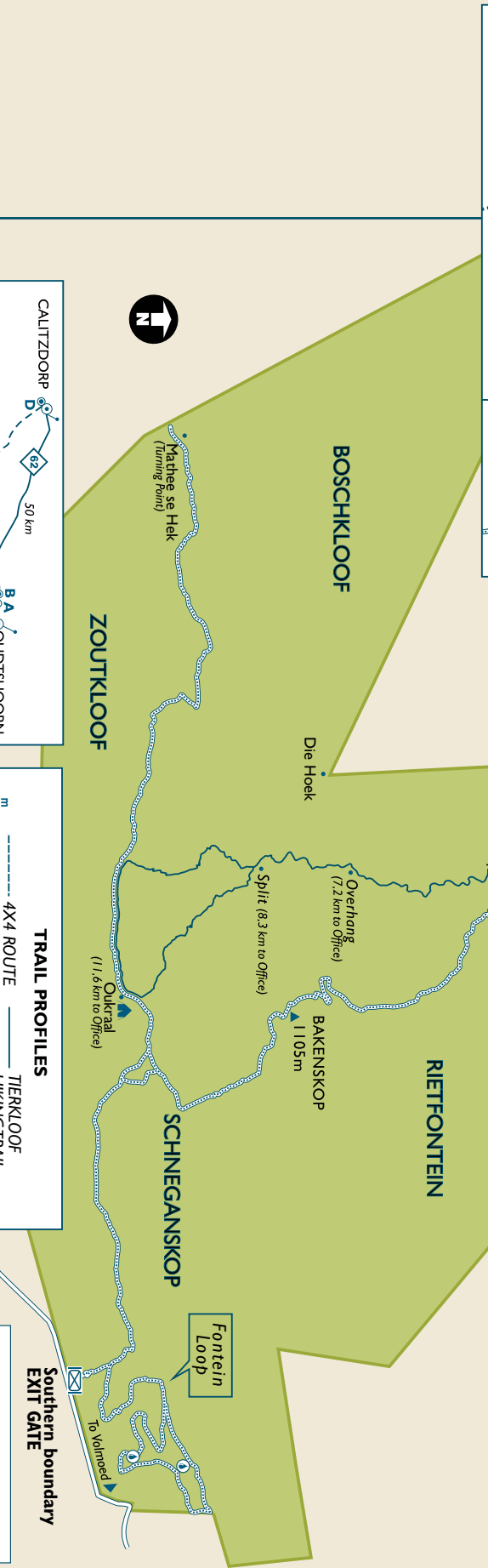
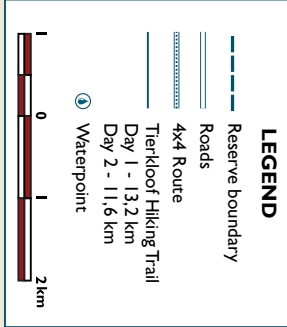
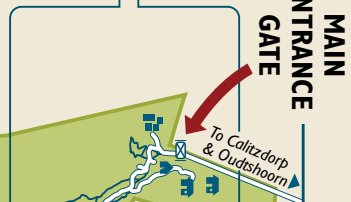
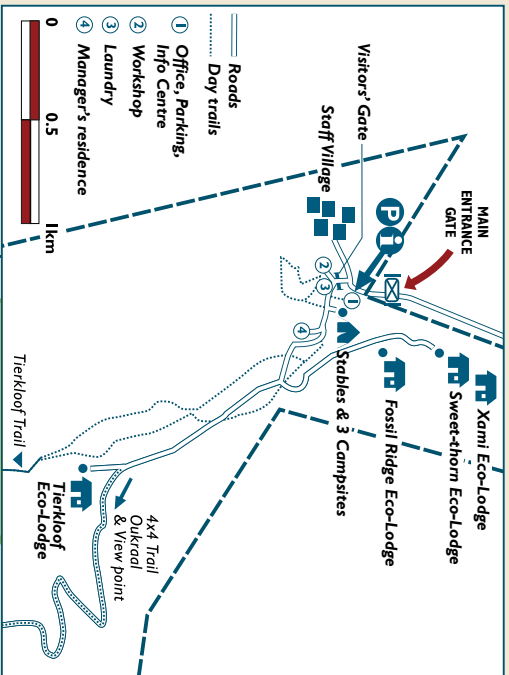
This is an extremely sensitive environment and has thus previously not been open to the public. It is also for this reason that the route is open only to visitors using the overnight facilities on Gamkaberg. Visitors are reminded that under no circumstances may vehicles leave the track. There are no refuse bins along the track so please take all your refuse out with you.

A maximum of three groups will be allowed on the route per day and this will be allowed on a first come first served basis.

Remember:

1. Stay on the track at all times.
2. It is illegal to remove any plant, animal or rock from the property.
3. Practice "leave no trace" principles and take all your refuse (to the smallest detail) out with you.
4. The route is not technical but is unsuitable for low clearance 4x4 vehicles. It is graded 3 (i.e. low range and limited off road knowledge required).
5. Remember to take your own water and braai wood.
6. Fires are only permitted in the demarcated fire places.
7. Please respect the privacy of other people you encounter along the route.

GANKABERG NATURE RESERVE



Combination of the Southern Gate Lock will be issued by the duty officer to the client if they prefer the option of exiting on the Southern side of the reserve.





SWIMMING POOL

Swimming is only permitted for guests staying in the Eco-Lodges.



TO ENSURE THAT ALL VISITORS HAVE A PLEASANT STAY, THE FOLLOWING IS NOT PERMITTED

- Music and rowdy behavior
- Pets (**No Dogs/Cats**)
- Disturbance to plants and animals
- High noise levels after 22:00
- Firearms
- Picking of flowers or collecting of seeds
- Fires except in designated areas
- Horse riding



FAUNA

The rare and endangered Cape mountain zebra, leopard and honey badger are some of the reserve's fauna highlights. Other mammals include eland, kudu, red hartebeest, grysbok, grey rhebuck, klipspringer, duiker, steenbok, baboon, caracal, aardvark, aardwolf, black-backed jackal and numerous smaller species. The reserve is host to a wide variety of birds, reptiles and insects.



FLORA

Situated within the Cape Floral Kingdom, which hosts one of the richest flora on earth, the reserve is of particular interest to botanists. Here, four of the South African biomes are represented, namely Fynbos, Succulent Karoo, Subtropical Thicket and Evergreen Forest. The best times of the year to visit are in Spring and Autumn but visits throughout the year can be rewarding.



DISCOVER *the* REGION



NEAREST TOWNS

- Oudtshoorn (33km)
- Calitzdorp (32km)



SUPERMARKETS

- Pick n Pay, Spar, Checkers and Shoprite - Oudtshoorn
- Spar & Shoprite U-Save - Calitzdorp

PHARMACIES

- Alpha Pharm (Oudtshoorn)
044 272 0400
- Family Care
044 279 2016



RESTAURANTS & BARS

OUDTSHOORN

- **Nostalgie Restaurant**
044 272 4085
- **Bella Cibo**
0442723245
- **The Black Swan Restaurant**
044 272 0982
- **La Dolce Vita**
0442793269
- **Rou Karoo**
0789752385
- **Karootpot Restaurant**
0442035459
- **Die Smitswinkel**
0761978385
- **Route 62 Bar and Grill**
044 203 5460

CALITZDORP

- **Porto Deli**
044 213 3007
- **Giovanni's Italian Country Kitchen**
083 428 1108
- **Die Dorphuis**
072 020 6306
- **Die Bakhuis**
0649 617 574
- **Zamani Grill**
083 881 9334
- **Under The Peppertree**
083 999 0646
- **Karoboom Braai**
044 007 0034
- **The Kombuis**
060 955 5708



NEAREST PETROL STATIONS

- **Engen Klein Karoo (Oudtshoorn)**
044 279 2499
- **Caltex Klein Karoo (Oudtshoorn)**
044 203 5790
- **Caltex J S Motors (Calitzdorp)**
044 213 3302





LOCAL ATTRACTIONS

- **Cango Wildlife Ranch**
044 272 5593
- **Chandelier Game Lodge and Ostrich Show Farm**
072 742 4405
- **Buffelsdrift Game Lodge**
044 272 0000
- **Highgate Ostrich Show Farm**
044 272 7115
- **Minwater Eco Adventure**
082 481 3625
- **Safari Ostrich Show Farm**
044 272 7311
- **Skydive Oudtshoorn**
072 590 8336
- **Cango Caves**
082 303 0029
066 486 9475
- **Wilgewandel Holiday Farm & Restaurant**
072 784 6732
- **NOVA Hot Air Balloons**
082 899 6374

Natural Hotspring Spa's

- **Karoorwater Guest Farm**
076 382 3477
- **Calitzdorp Hot Springs**
044 213 3371

Wine, Gin, Art Tasting Experience

- **Grundheim Wines:**
044 272 6927
- **Karusa Premium Wines & Craft Brewery:**
044 272 8717
- **Black Mountain Gin:**
063 345 7400
- **Calitzdorp Wine Cellar:**
044 213 3301
- **Boplaas Winery and Distillery:**
044 213 3326
- **De Krans Wines:**
044 213 3314



Cango Caves - Oudtshoorn



De Krans Wines Calitzdorp

INSTRUCTION *Manuals*



GAS STOVE

OPERATION INSTRUCTIONS

- Do not keep hot cookware on the control panel, or let cookware boil dry.
- Be careful not to let objects or cookware fall on the appliance the surface can be damaged.
- Do not activate the cooking zones with empty cookware or without cookware.
- Make sure cookware is centrally positioned on the burners.
- Make sure the flame does not go out when you quickly turn the knob from the maximum to the minimum position.
- Use only the accessories supplied in the kitchen.
- This appliance is for cooking purposes only. It must not be used for other purposes, for example, room heating.
- Do not let acid liquids, for example, vinegar, lemon juice, or limescale remover, touch the hob. This can cause matt patches.

IGNITION OF THE BURNER

- Always light the burner before you put on the cookware.
- Push the control knob down and turn it counterclockwise to the maximum.
- Keep the control knob pushed for equal or less than 10 seconds. This lets the thermocouple warm up. If not, the gas supply is interrupted.
- If after some tries the burner does not light, check if the crown and its cap are in the correct positions
- Do not keep the control knob pushed for more than 15 seconds. If the burner does not light after 15 seconds, release the control knob, turn it off and try to light the burner again after a minimum 1 minute.
- Turning the burner off To put the flame out, turn the knob to the off position, always turn the flame down or switch it off before you remove the pans from the burner.



IN CASE *of* EMERGENCY



GAMKABERG DUTY OFFICER

REMEMBER: THERE IS ALWAYS A
DUTY OFFICER (072 202 3438)
AVAILABLE EITHER AT THE OFFICE OR
AT THE STAFF VILLAGE!

Lost or Injured:

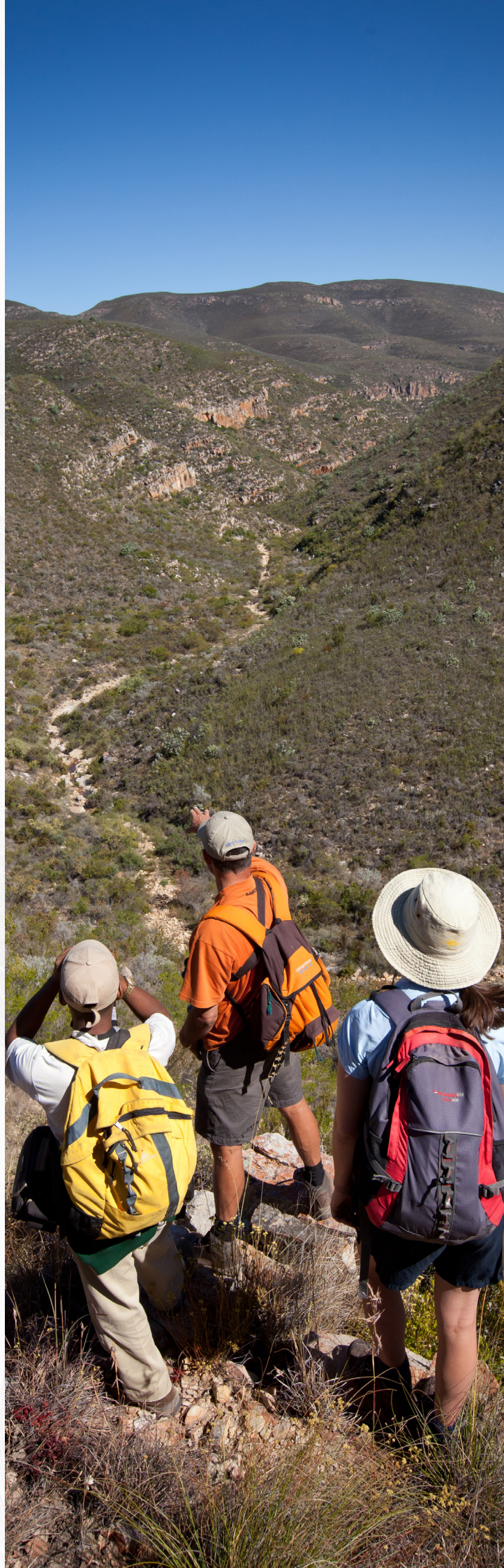
- If lost or injured stay where you are and if you have reception, phone one of the emergency numbers.
- Do not try to move around at night.
- If you do not have reception, clearly mark the area where the injured person is, leave warm clothing and water and make your way to the Reserve Office area.
- • The duty staff has access to a 4x4, first aid kits and a telephone in case of emergency.
- If you do not return from your hike as arranged prior to your leaving because you are lost or injured, do not panic, reserve staff will be alerted and a search will start.



EMERGENCY TELEPHONE NUMBERS

In case of emergency phone any of these numbers:

- Gamkaberg Nature Reserve:
087 288 0373
- Reserve Manager/Officer:
Nkosekhaya Sam Pinzi: 066 225 9073
- Tourism Duty Officer at Reserve:
072 202 3438
- Mountain Rescue: 082 339 1240
- Fire Duty Officer at Reserve:
072 729 4730
- Mountain Club of SA: 082 323 4349
- 24/7 Weather Report: 083 123 0500
- Eden District Centre for emergencies:
044 279 1415
- 4x4 Rescue service (J.R. Towing)
082 770 4181



IN CASE *of* EMERGENCY



SOUTH AFRICAN POLICE SERVICE

- Oudtshoorn
044 203 9014



AMBULANCE

- Provincial: 10117 (Oudtshoorn)
- ER24 Oudtshoorn: 084 124



HOSPITAL

- Oudtshoorn District Hospital
044 203 7200
- Mediclinic Klein Karoo:
086 177 7337
- Mediclinic Emergency Department:
044 272 0111
- Cango Clinic for medical emergencies
044 272 3405



DOCTORS

- Dr Deon Barnard
(General Practitioner)
083 275 1464 | 044 2726138
- Dr Pietie du Toit (General Practitioner)
044 272 7318



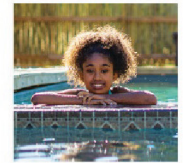
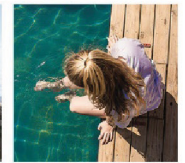
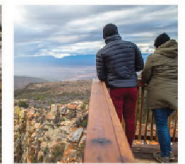
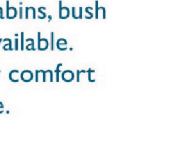
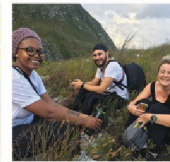
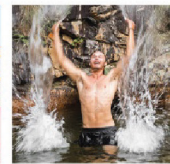
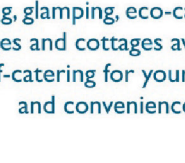
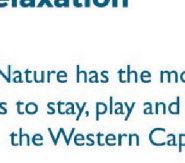
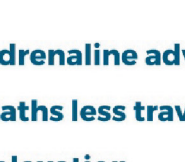
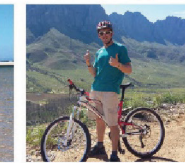
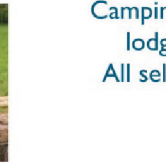
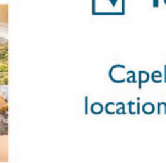
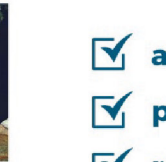
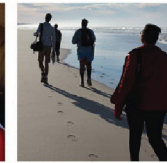
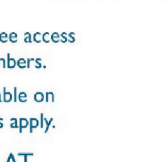
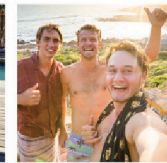
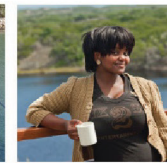
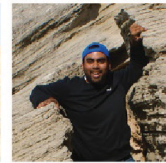
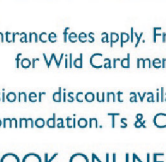
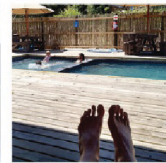
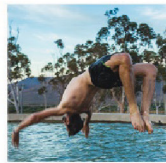
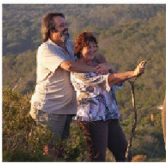
IN CASE OF VENOMOUS SNAKE BITES

- Poison Information Centre:
021 931 6129
- Tourism duty officer: 072 202 3438
In case of snake bites: Please report to
the Duty Officer.
- Common snakes of Gamkaberg
Nature Reserve and emergency
protocol in the
- event of a snake bite:





EXPLORE AND #LoveNature



- adrenaline adventure
- paths less travelled
- relaxation

CapeNature has the most idyllic locations to stay, play and discover in the Western Cape.

Camping, glamping, eco-cabins, bush lodges and cottages available. All self-catering for your comfort and convenience.



Entrance fees apply. Free access for Wild Card members.

Pensioner discount available on accommodation. Ts & Cs apply.

BOOK ONLINE AT
www.capenature.co.za
Tel 087 087 6292



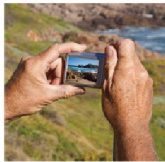
/capenature1



@capenature



@capenature1



Share your memories with us!