

Our Wonderful Fisheries

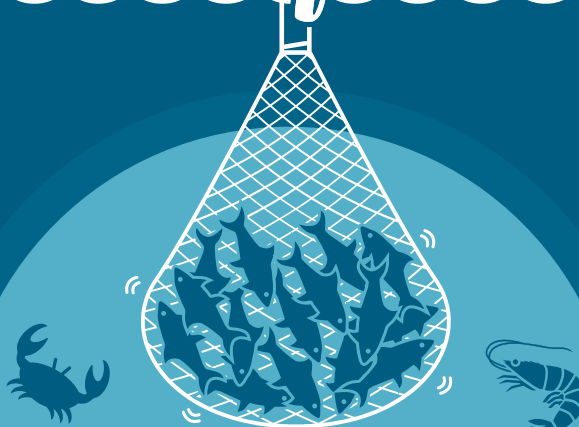


71%

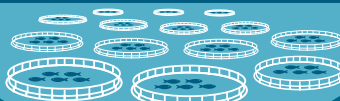
of people
EMPLOYED
in the
FISHERIES SECTOR
are from the
WESTERN CAPE



The human population
consumes
> 100 MILLION TONS
of fish
ANNUALLY



*A fishery is the enterprise of
raising or harvesting fish and
other sea life.*



1/4

of the
WORLD'S
DIETARY PROTEIN
is provided by
FISH



*Fisheries include wild fisheries and
fish farms, both in fresh water (10%)
and the oceans.*

1/3

of the
WORLD'S
FISHERIES
are currently
OVER FISHED

