



Ukusindisa izilwanyana nezityalo zethu zasendle – ukulwa ulwaphulomthetho kwiindidi zezilwanyana nezityalo ezohlukeneyo

UMHLA: XXX

INDAWO: XXX

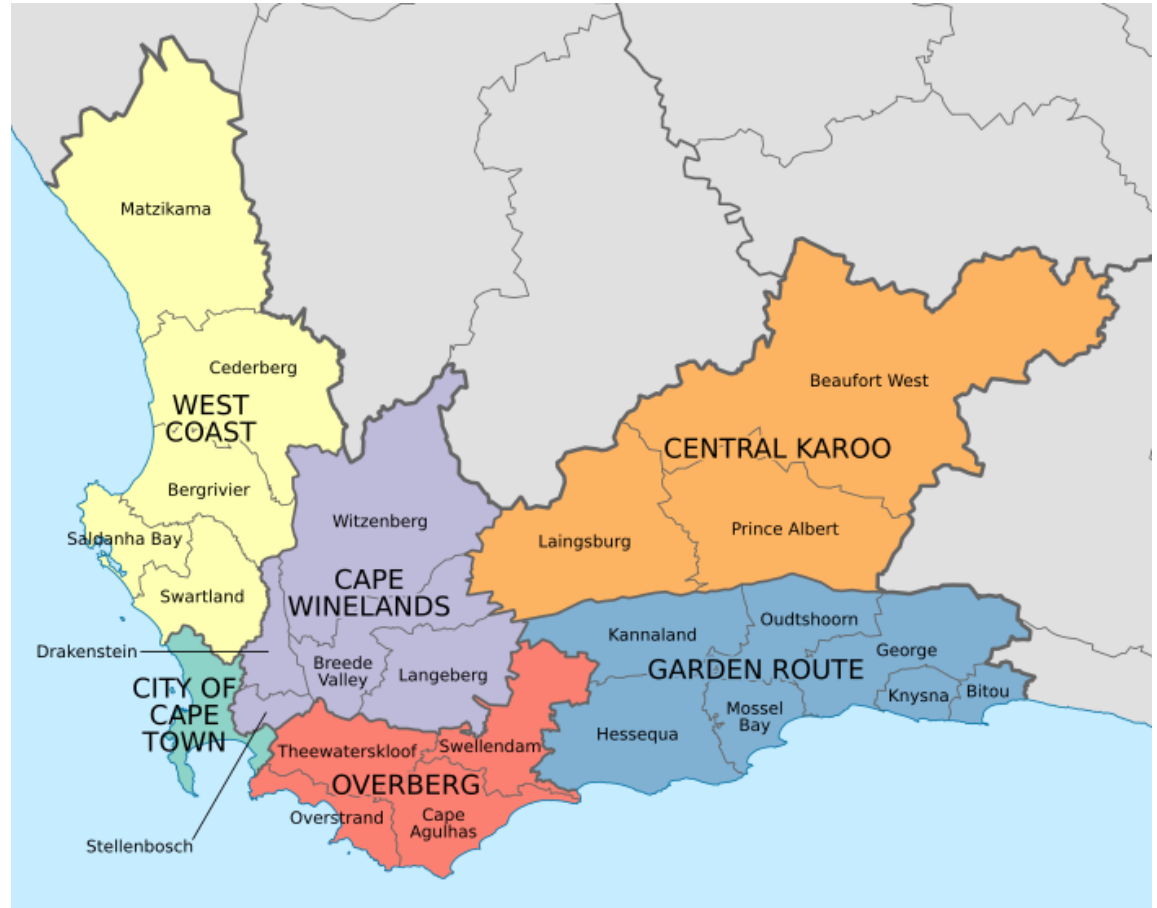
IGAMA: XXX

Isihloko: XXX

Singobani?



UCapeNature
yinxenye
karhulumente
ekhusela ubomi
obenzeka ngendalo
bezityalo
nezilwanyana (iindidi
zezilwanyana
nezityalo
ezohlukeneyo)
eNtshona Koloni.



Ukucacisa iindidi zezilwanyana nezityalo ezohlukeneyo kunye neenkonzozo zendalo



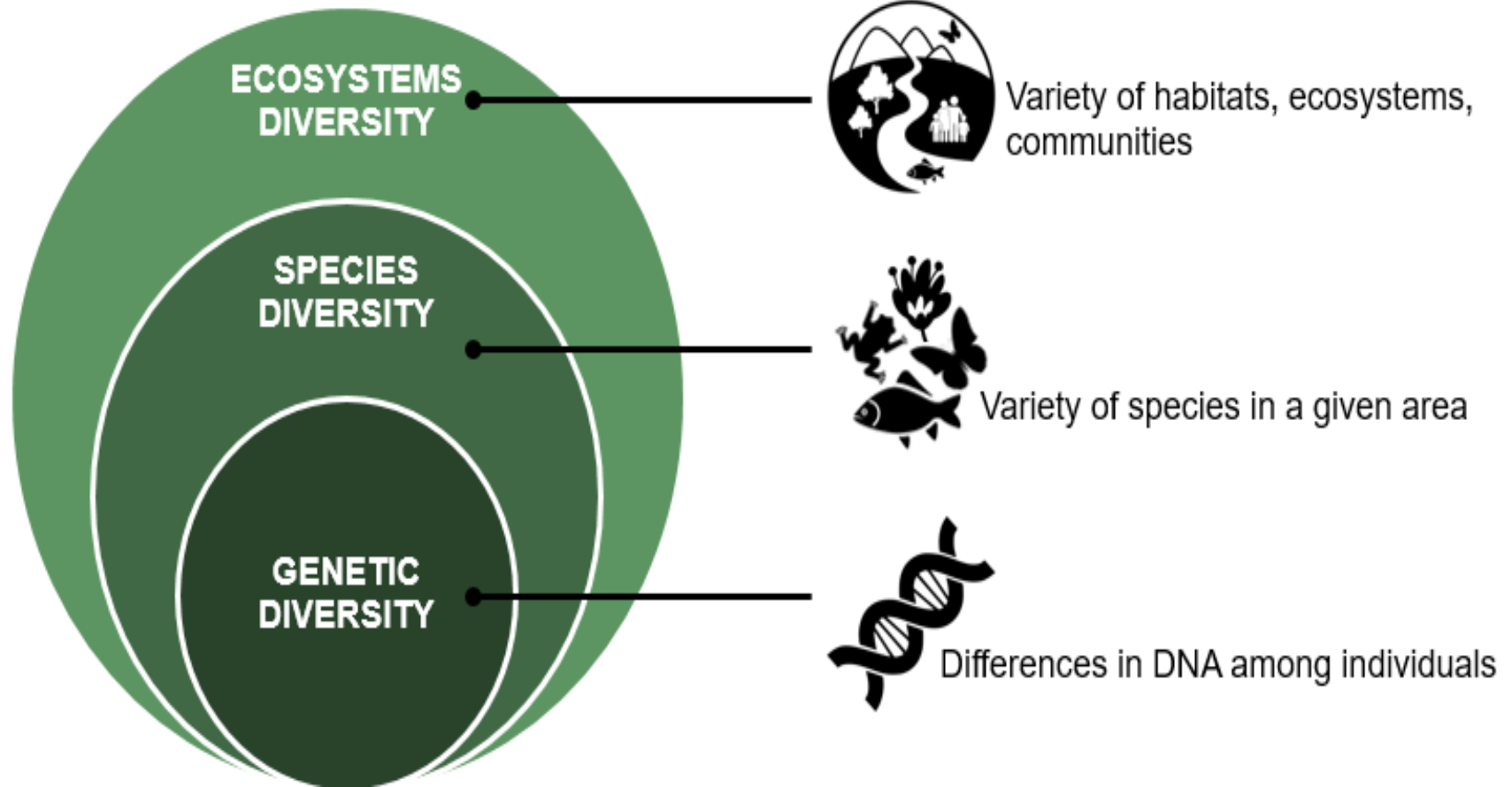
Yintoni iindidi zezilwanyana nezityalo ezohlukeneyo?

BIO-DIVERSITY

Biological - 'life'

'variety'

Biodiversity is the variety of life on Earth, including genes, species and ecosystems



IINDIDI ZEZILWANYANA NEZITYALO EZOHLUKENEYO



Sifumana ntoni kwiindidi zezilwanyana nezityalo ezohlukeneyo?



Plants & Animals

Soil forms through the gradual breakdown of rocks through physical, chemical and biological weathering.

Support:

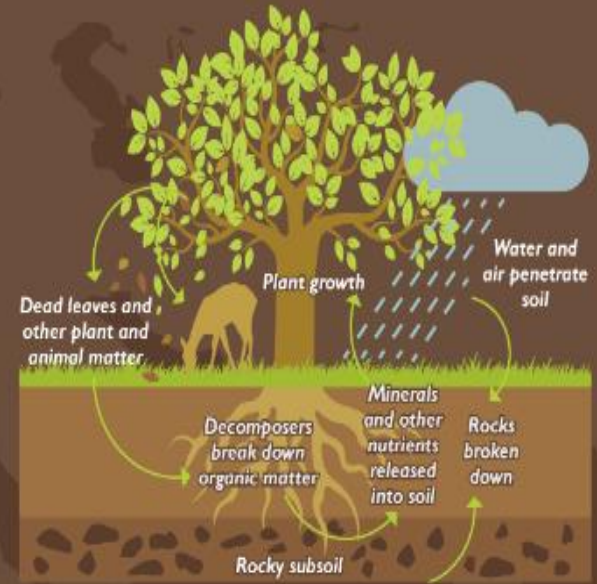
BIOLOGICAL WEATHERING
Plants, micro-organisms such as bacteria or fungi, burrowing insects, animals and humans make soil, ready for plants to grow.



Soil formation
Burrowing animals help water and air get into rock, and plant roots can grow into cracks in the rock, making it split and disintegrate.



NUTRIENT CYCLE (Ecological Recycling)
The movement and exchange of organic and inorganic matter back into the production of matter.



Plants & Animals

Regulate:



Climate



Disease



Pollination



Water purification



Plants & Animals

Provide:



Oxygen



Medicine



Food



Fuel

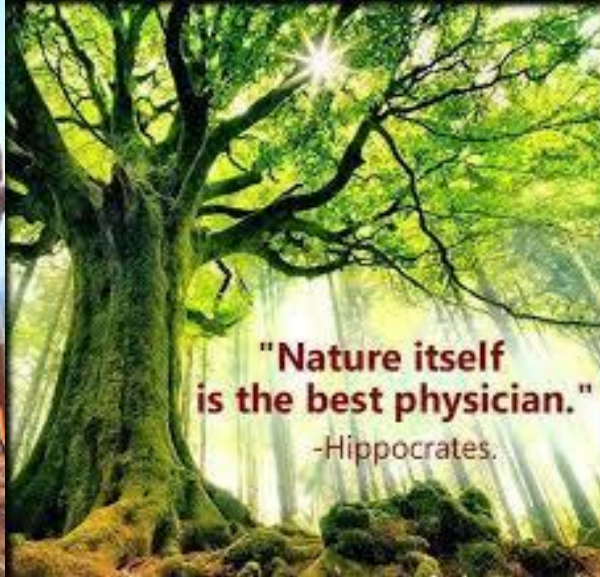
BIODIVERSITY = LIFE

You can't have one without the other

lindidi zezilwanyana nezityalo ezohlukeneyo zinika izinto ezifana nokutya, ikhusi, amanzi nemathiriyeli ekrwada.



- Impilo nolonwabo
- linkonzo zenkcubeko – ixabiso elinxulumene nobuhle nolonwabo



lindidi zezilwanyana nezityalo ezohlukeneyo zilawula iinkonzo ezifana nomvumvuzelo nokucocwa kwamanzi.



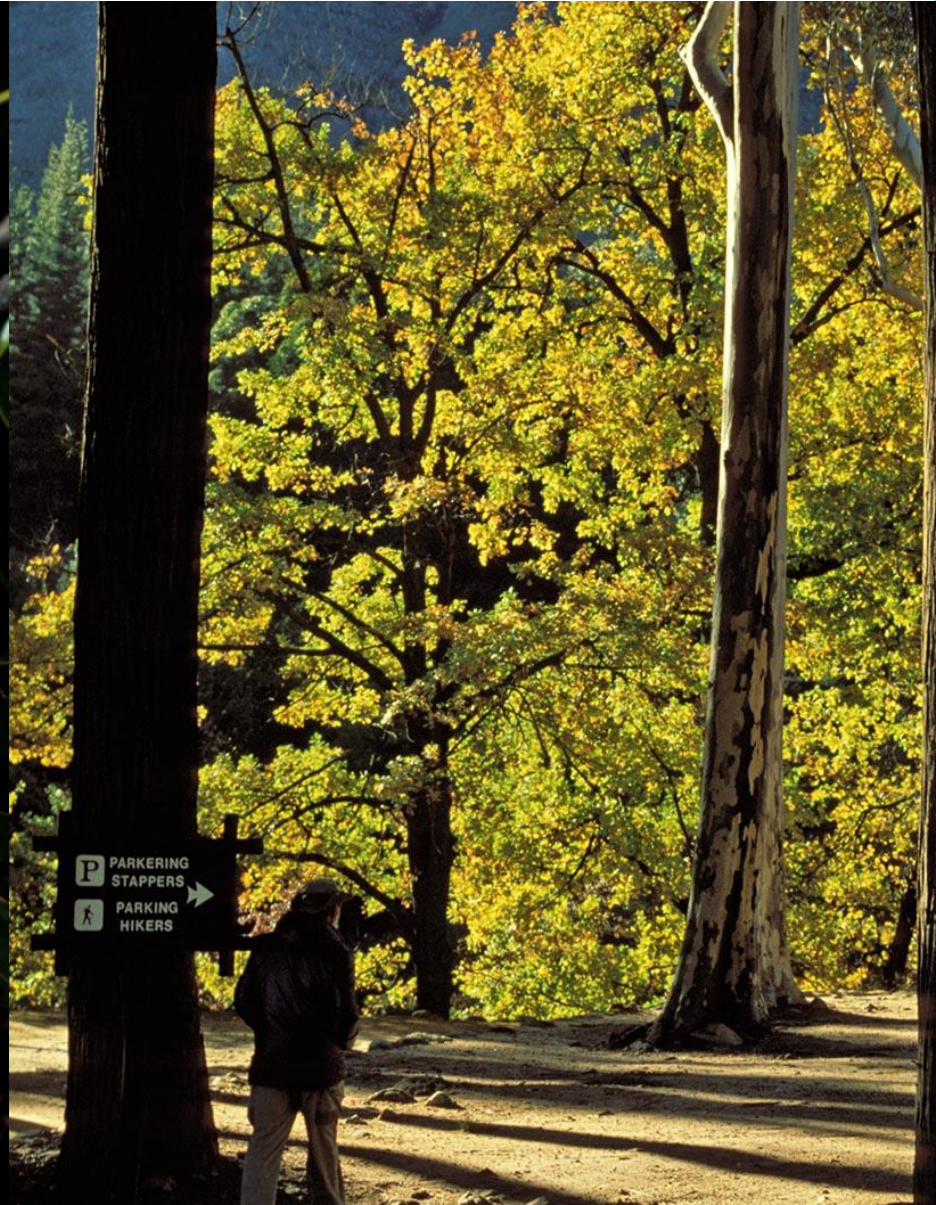
Iindidi zezilwanyana nezityalo ezohlukeneyo zibiza abakhenkethi, oko ngenye indlela kunika imisebenzi.



=

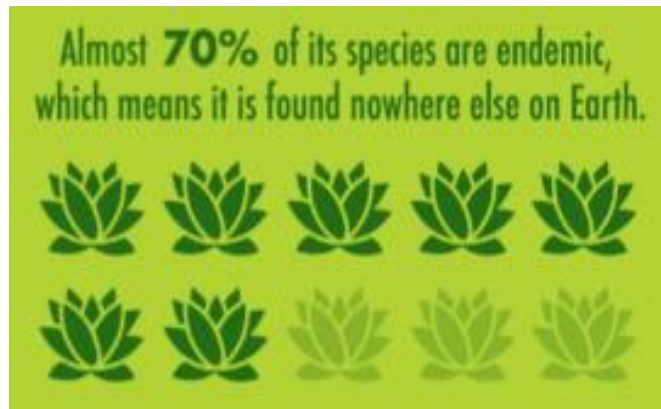


Imiba enika umdla ngeendidi zezilwanyana nezityalo ezohlukeneyo eNtshona Koloni

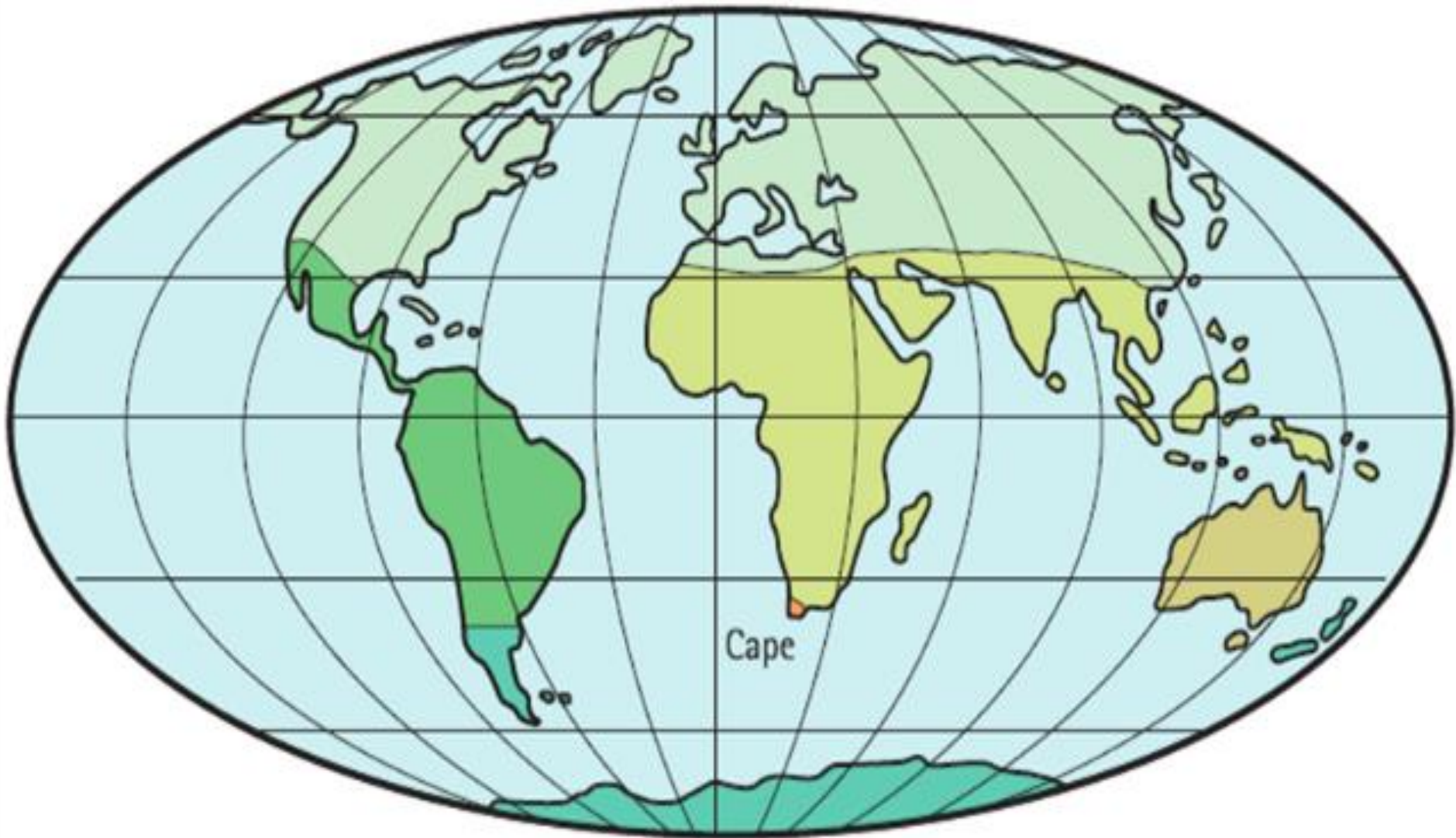


Iindidi zezilwanyana nezityalo ezohlukeneyo eNtshona Koloni zizodwa kwaye akukho okunokungena endaweni yazo

- INtshona Koloni likhaya **kobona** bukhumkani buthandathu beentyatyambo behlabathi, undoqo wommandla onganeno weKapa.
- Lo uqulethe malunga nama- **9 300** eentlobo zezityalo (ezingaphezulu kunezaseYurophu xa iyonke!).
- Iindidi zethu zezilwanyana nezityalo ezohlukeneyo zikhetheke ngokumangalisayo kwaye kufuneka zikhuselwe.



Floral Kingdoms of the world



Cape

- Antarctic/Patagonian
- Australian
- Boreal
- Neotropical
- Palaeotropical

Ulwaphulomthetho kwiindidi nezityalo ezohlukeneyo



Ulwaphulomthetho kwiindidi zezilwanyana nezityalo ezohlukeneyo lusongela iindidi zethu zezilwanyana nezityalo ezohlukeneyo

BEWARE OF BIODIVERSITY CRIME

Biodiversity Crime involves the illegal collection or exploitation of indigenous wild animals and plants.

● Rectangular Snip

It can destroy our natural resources, habitats and biodiversity.

It compromises our natural heritage and the ecological integrity of the Western Cape.

It contributes to general criminal activity with all its negative social consequences.



Intlobo zolwaphulomthetho kwiindidi zezilwanyana nezityalo ezohlukeneyo

What are some illegal biodiversity activities?

Illegal trade in animal carcasses (skins, tusks, horns, meat etc.).

Illegal hunting of protected wild animals.

Illegal picking and possession of flora.

Illegal hunting of game and the use of illegal hunting methods, such as traps, snares, or poison.



Ngoobani aboni?



SCIENTISTS

- Botanists, zoologists etc. who do research in a specific field or on a specific taxon.
- Individuals in this category often do this research without permits.
- They often collect additional specimens, without permission, for propagation for commercial purposes.

PROFESSIONAL TRADERS

- Foreign nationals who collect animals and plants with solely a commercial motive.
- The availability of South African species on online catalogues is evidence of the scale of the trade.

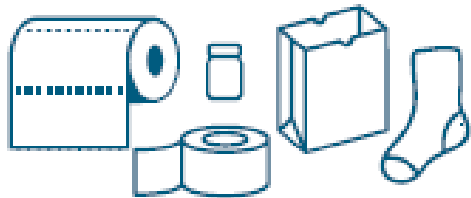
SYNDICATE RECRUITS

- Syndicates fund the travel of recruits to South Africa.
- Their job is to collect certain numbers and species of plants or animals.
- If they are caught, they are abandoned to fend for themselves.

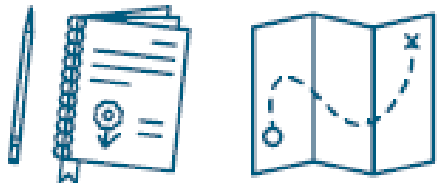
Yeyiphi imiqondiso ekufuneka siyijonge?



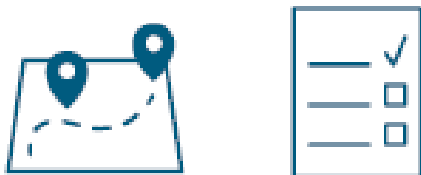
Everyday items such as screwdrivers, crow-bars, wire, nets and fishing rods are used to catch wild animals or to dig out plants.



Perpetrators use cloth, toilet paper, Roller towel, brown paper bags, socks, duct tape, small containers and other materials to package and conceal their contraband.



Field guides or similar books, pamphlets, maps and GPS equipment are usually part of their equipment.



They often have a detailed itinerary which lists their planned destinations.



Wild animal traffickers will use lights to attract insects or to hunt other types of wild animals at night.



Vehicles that stop intermittently on public roads are suspicious. Often someone will get out and walk seemingly aimlessly in the veld before they head off again.



Vehicles may pull off public roads and park with their boots open in which containers and capture apparatus may be visible.



Ukufumana izisombululo kwiintsongelo kwiindidi zezilwanyana nezityalo ezohlukeneyo



Wenza ntoni u-CapeNature?



Ukusukela ngo-2015, umanyano lwe-CapeNature negunyabantu lezotshutshiso lephondo kunye nelesizwe lukhokelele ngaphezulu kwama-600 amanyathelo okunyanzelliswa komthetho kulwaphulomthetho.

Yintoni onokuyenza?



REPORT THE FOLLOWING

Illegal use of traps and snares and poison.

The transport of game and plants such as buchu, proteas and succulent plants on public roads.

Any suspicious activities and irregularities to CapeNature or the nearest police station.

Report a crime anonymously to the police on the
CRIME STOP TIP-OFF LINE 086 00 10111

Call the emergency police telephone number
10111 from a landline, or 112 from a cell phone

Contact CapeNature directly
<https://www.capenature.co.za/contact-us/offices/>

- Do not provide information to strangers about the distribution of plant and animal species.
- Do not let strangers convince you to act as their guide, or to accept payment, or to provide information about specific plant and animal species.
- Make detailed notes about suspicious vehicles. Note the registration numbers, model, colour, number of occupants, nationality of the occupants, time of day and the place where it was seen. Try to take photographs.
- Never try to confront people acting suspiciously yourself.



Qiniseka ukuba WENA uthobela umthetho.



- limvume
- Ubukhulu boko ukubambileyo
- Imida kwiibhegi
- Ingaba kuvumelekile ukuvuna?

THANK YOU.

Report a crime anonymously to the police on the
CRIME STOP TIP-OFF LINE 086 00 10111

Call the emergency police telephone number
10111 from a landline, or 112 from a cell phone

Contact CapeNature directly
<https://www.capenature.co.za/contact-us/offices/>