



Izityalo eziyingozi

UMHLA: XXX

INDAWO: XXX

XXX

UMsebenzi aWenzayo: XXX

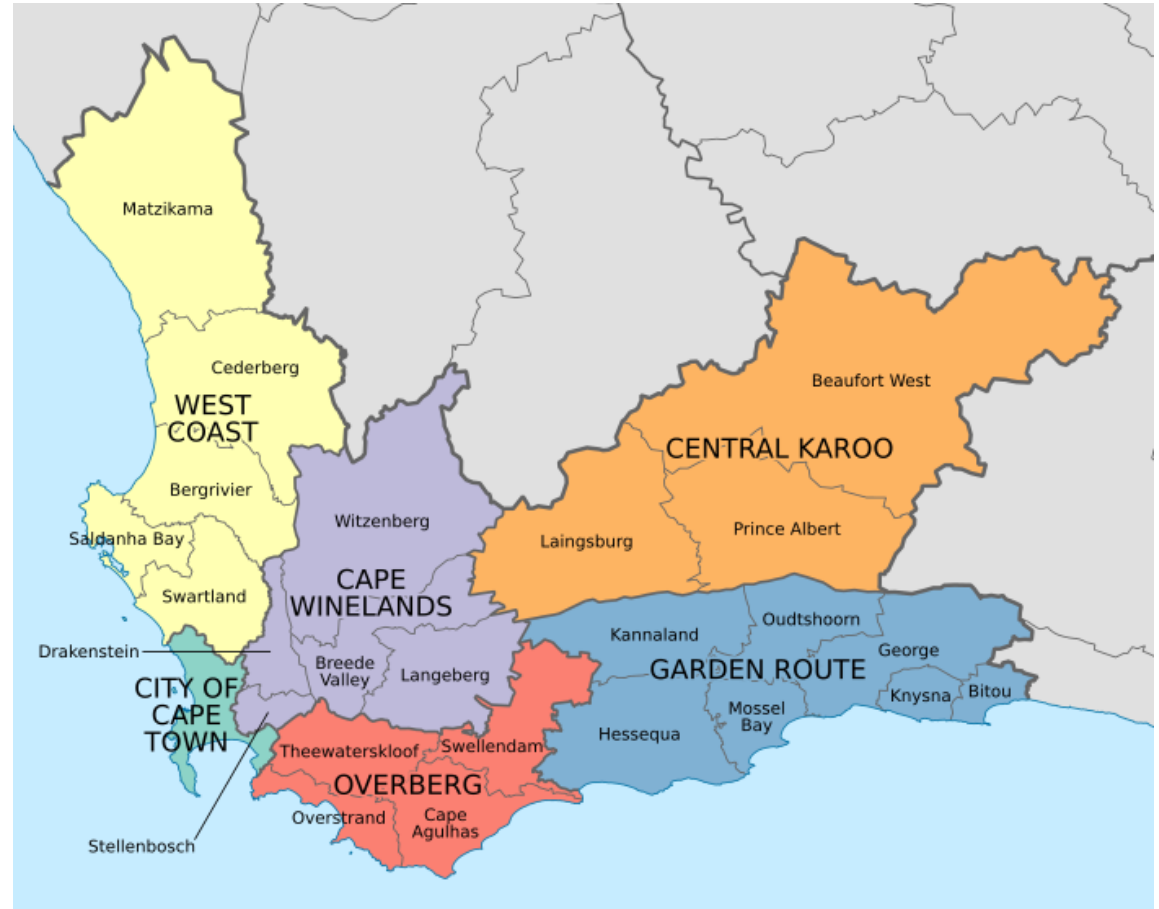
INTSHAYELELO



Singobani?



UCapeNature yinxenye karhulumente ekhusela ubomi obenzeka ngendalo bezityalo nezilwanyana (iindidi zezilwanyana nezityalo ezohlukeneyo) eNtshona Koloni.



Yintoni izityalo eziyingozi?

Zizityalo eziye zazinza zaze zanabela ngaphaya koluhlu lwazo lwendalo (okanye ezinako ukwenza njalo).

- Zisongela indalo, iindawo ezihlala izityalo nezilwanyana kunye nezinye izityalo.
- Zinokubanga umonakalo kuqoqosho kunye/okanye kokusingqongileyo, okanye ukwenzakala kwimpilo yomntu.



EZASEKHAYA



EZIYINGOZI



CapeNature

Eziyingozi zithelekiswa nezivela kwelinye ilizwe

Xa izityalo ezivela kwamanye amazwe zisiba yingozi kwindalo, kuthiwa zizityalo eziyingozi.

Ezivela kwamanye amazwe = aziyongozi kwindalo



EZIYINGOZI – INGXAKI



Iindidi zezilwanyana nezityalo ezohlukeneyo eNtshona Koloni zizodwa kwaye akukho okunokungena endaweni yazo

INtshona Koloni likhaya **kobona** bukhumbani buthandathu beentyatyambo behlabathi, undoqo wommandla onganeno weKapa – izityalo zazo azifunyanwa NAKWEYIPHI NA ENYE INDAWO EMHLABENI.



● Boreal (Holarctic) ● Neotropical ● Australian ● Palearctic ● South African (Capensis) ● Antarctic

Mayingene loo nto ...

- INtshona Koloni inamalunga nama- **9 300**
eentlobo zezityalo (ezingaphezulu
kunezaseYurophu xa iyonke!).

Almost **70%** of its species are endemic,
which means it is found nowhere else on Earth.



The Core Cape
Subregion comprises

less than
0.05%
of the earth's land
surface, yet harbours
3% or 4%
of the world's species.

Mayingene loo nto ngokunjalo...

Izityalo eziyingozi zineempembelelo ezinkulu

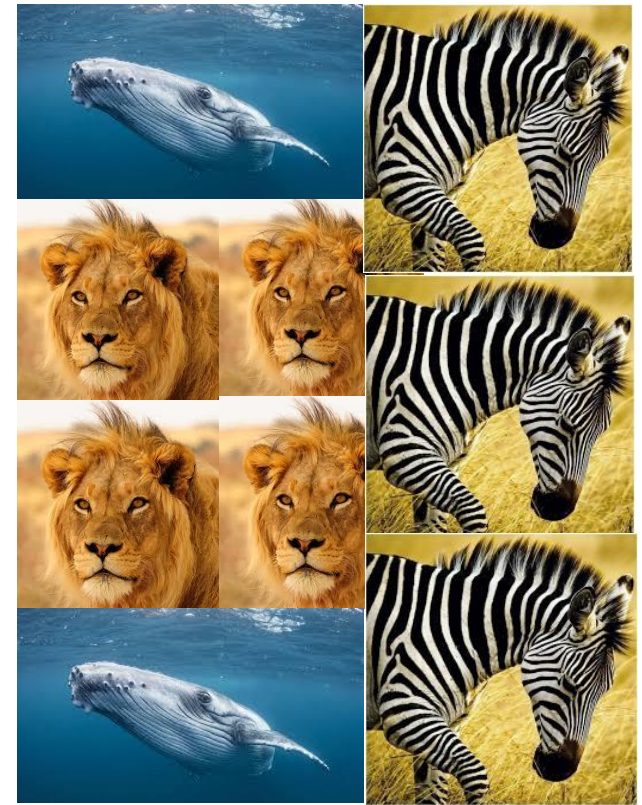
Zinokwenza ukuba ziphele izityalo kunye nezilwanyana zalapha ekhaya.



Izityalo eziyingozi zikhokelele ekupheleni kwesinye esithathwini sezilwanyana ukususela ku-1500.

lindidi zezilwanyana nezityalo
ezohlukeneyo ezinciphileyo

Ukusuka koku



... ukuza koku.

Izityalo eziyingozi zichaphazela ukufumaneka kwamanzi.

Izityalo eziyingozi zonakalisa izondli zomhlaba.

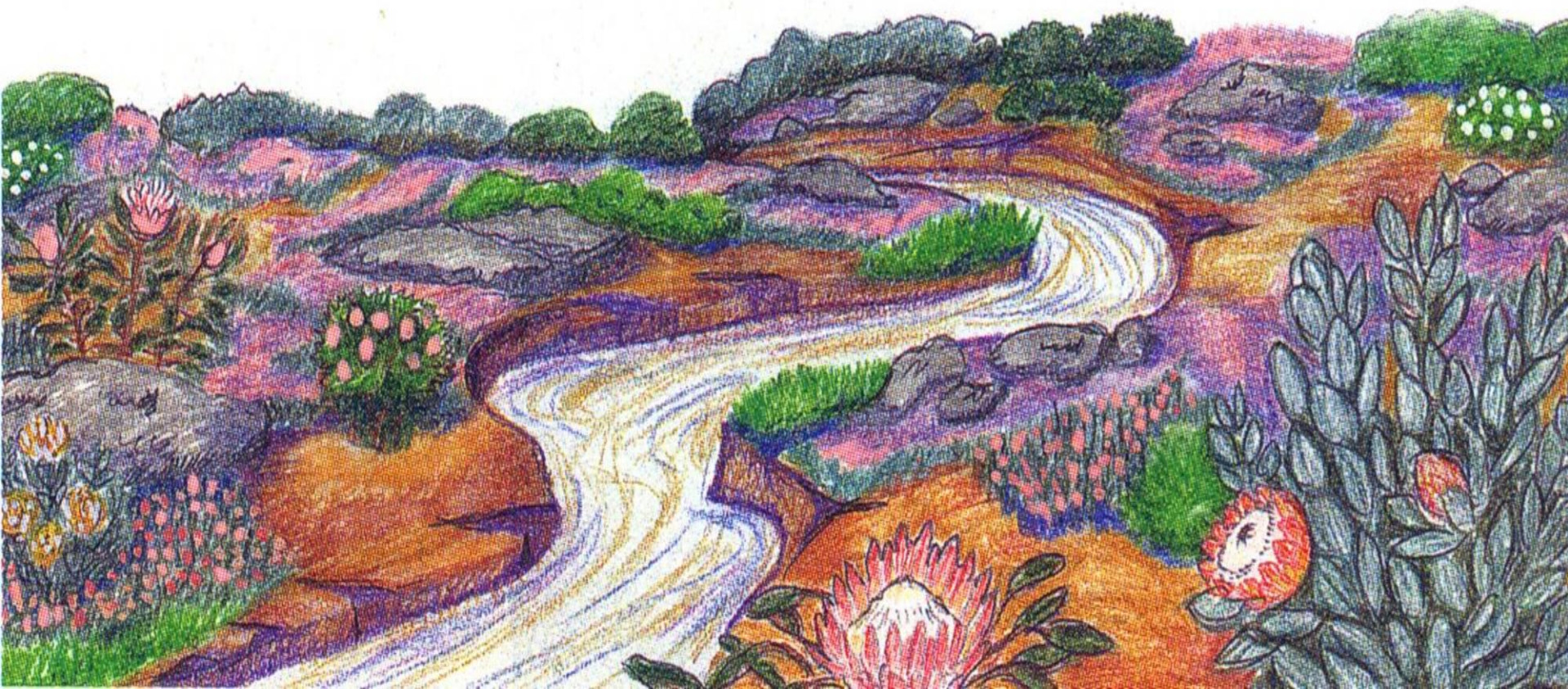
Izityalo eziyingozi zitshintsha iindawo zezityalo kunye nezo zihlala izilwanyana.



Ubusazi ukuba ibuzi elimnyama lithathwa njengesilwanyana esiyingozi esithathelwa ingqalelo phakathi kwezili-100 zehlabathi kwaye kuqikelelwa ukuba afunyanwa kuma-80% eqela leziqithi zehlabathi?

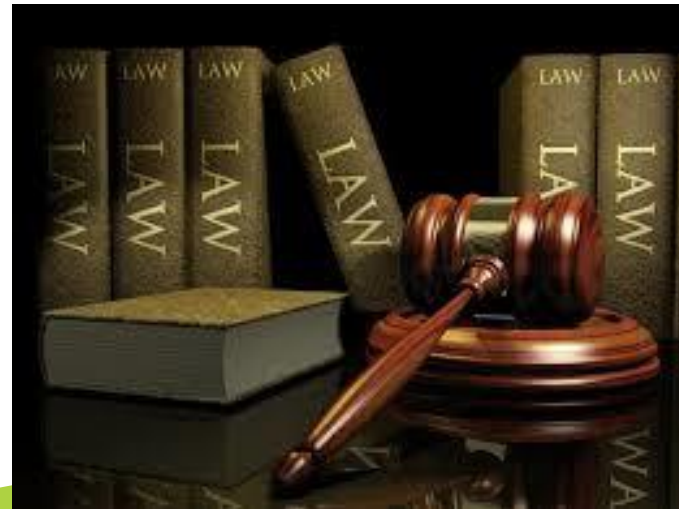
FAKA IMIFANEKISO EMBALWA YEZITYALO EZIYINGOZI KUMMANDLA WAKHO

EZIYINGOZI – ISISOMBULULO



Uthini umthetho?

ISebe leMicimbi yokusiNgqongileyo (Department of Environmental Affairs) (DEA) lilawula izityalo eziyingozi phantsi koLawulo lokusiNgqongileyo kweSizwe: UmThetho weeNdididi zeziLwanyana neziTyalo ezoHlukeneyo (NEMBA) we-10 ka-2004. Lo mthetho ujolise ekuboneleleni ngenkqubo sikhokelo, izithethe nemigangatho yolondolozo, ukusetyenziswa ngokuzinzileyo kunye nokwabelana ngeenzuzo okulinganayo eMzantsi Afrika.



Ama-559 ezityalo eziyingozi ohlulwe ngokweendidi ezine:

- Udidi loku-I a: ukufuna ulawulo olunyanzelekileyo. Ukususa nokutshabalalisa. Ukungabikho korhwebo okanye ukutyala.
- Udidi loku-I b: ulawulo nanini kusenzeka, ukususa nokutshabalalisa. Ukungabikho korhwebo okanye ukutyala.
- Udidi lwesi 2: ezinokuba yingozi, iyafuneka invume. Kuquka izityalo zorhwebo.
- Udidi lwesi-3: zinokusala kwimimandla emiselweyo. Ukutyala okungaphaya, urhwebo kunye nokusasaza kuthintelwe.



Yellow flag iris (*Iris pseudacorus*)



Castor-oil plant (*Ricinus communis*)

Into eyenziwa ngu-CapeNature

Amaqela abasebenzi kunye nabo banekontraki abalawula izityalo.

Ngama-327 835 eehektare alungisiweyo kwiminyaka emi-5 edlulileyo.



X 1



50

EELITHA/NGEMINI

Umthi om-1 wompayini usebenzisa ama-50 eelitha/ngemini = i-1 000 lemithi yemipayini isusiwe = ama-50 000 eelitha zamanzi abuyela kwinkqubo yamanzi.



CapeNature

Yintoni onokuyenza?

Ukususa izityalo eziyingozi xa kufunwa ngumthetho. Ukujoyina iqela lokunqanda.



Ukuxela izityalo eziyingozi.

Ukuzibona kwangoko kunye nokusabela ngokukhawuleza (Early detection and rapid response) (EDRR) kunokunqanda ukunaba kunye nokuvela kwezityalo eziyingozi phambi kokuba zizinze.

Yenye yeendlela ezingabizi kakhulu kwaye elungileyo kwindalo yokulawula izityalo eziyingozi kwaye iwufanele umzamo wokukhusela imithombo yendalo kunye neyezolimo.

WANTED

the European Paper Wasp *Polistes dominula*



DESCRIPTION

Black and Yellow body



Orange antennae

Size: ≈ 2 cm

BIOLOGY

Nests are made in spring (August) and abandoned in winter (June). Wasps eat other soft bodied insects.

CAUTION

Approach with caution. Wasps STING.

How can you help?

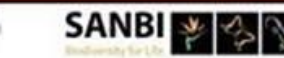
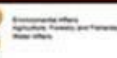
DO look for **NESTS** near eaves, gutters and washing lines.

DO NOT remove OR Doom nests with wasps present.

If you see this **WASP** or a **NEST** >> **CONTACT**: PC Benadé

How: pcbenade@sun.ac.za OR 082 555 8642

Please include: a **PHOTO**, **GPS** coordinates & **DATE** of observation



Tyala izityalo zasekhaya.



Yintoni enye?



THANK YOU.

Ulwazi oluthe vetshe: www.invasives.co.za