

THE BARN OWL CONFERENCE AND GOSHAWK

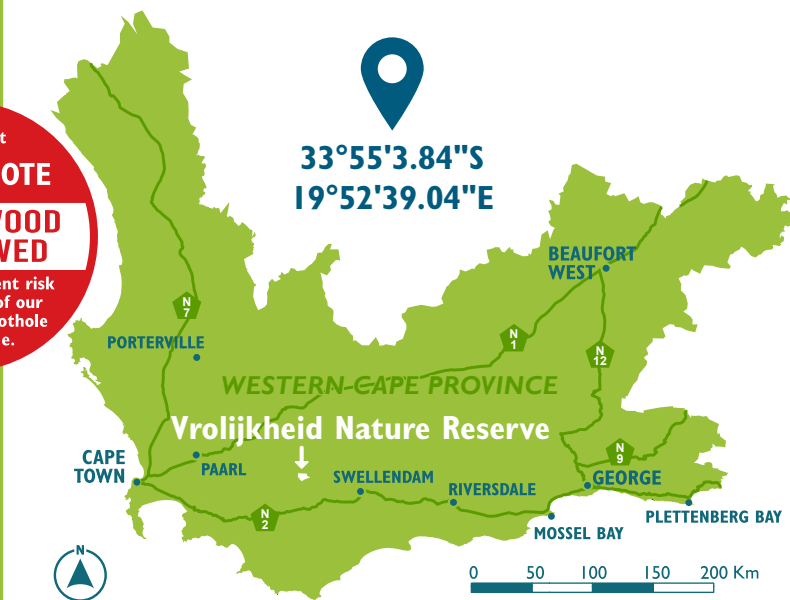


Vrolijkheid is a striking, rugged nature reserve in the Breede River valley, about 15km south of Robertson on the road to McGregor. The rocky landscape is starkly beautiful, dominated by patches of succulents, dwarf trees and shrubs. In spring, Vrolijkheid lives up to its name – happiness – as splashes of bright orange botterblom daisies decorate the reserve.

The vegetation in this area of the Little Karoo is known as Robertson Karoo vegetation, with guarri, karee and melkbos shrubs, patches of mountain renosterveld and sweet-thorn trees. Grasses are scarce in this arid area, which experiences extremely high temperatures from November to March every year.

Dear Client
PLEASE NOTE
NO FIREWOOD IS ALLOWED
due to the current risk of infestation of our trees by the Shothole Borer Beetle.

	RESERVATIONS	087 087 8250
	NATURE RESERVE	082 532 6256 082 496 2448
	OFFICE HOURS	07h30 - 16h00
	OVERNIGHT BOOKINGS	CHECK IN 14h00 - 16h00
		CHECK OUT 10h00
	DAY BOOKINGS	CHECK IN 08h00
		CHECK OUT 15h30
	GATE TIMES	07h30 - 16h00
	FOR SCHOOL GROUPS - a copy of the programme, list of learners and indemnity forms to be given to the officer on duty	



From Cape Town via N2

Take the N1 highway towards Paarl and travel for about 110km. Turn right onto the R60 and then left onto Robertson Road. Continue along this road and then turn right onto Reitz Street. About 13km further along, you will find the entrance gates of the reserve. This route is about 171km and should take about two hours.

From George via N2

Take the N2 highway towards Cape Town, travel for about 216km. Turn right onto R60 and then continue passing Ashton turn left onto Robertson Road. Continue along this road passing a roundabout continue straight until you find the 4 way stop. Turn left on the McGregor road continue for about 13km, you will find the entrance gates of the reserve. The route is about 285km and should take about 3 hours.

Distance from McGregor to Eco-Venue: 5km

Distance from Robertson to Eco-Venue: 15km



THERE IS NO SHOP ON THE RESERVE. FOOD, BEVERAGES AND OTHER PROVISIONS MUST BE BOUGHT BEFOREHAND.

THE BARN OWL CONFERENCE ECO-VENUE

PURPOSE



MEETINGS



CONFERENCE



EVENTS



TRAINING

CAPACITY

26



HORSESHOE

60



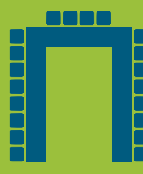
THEATRE

40



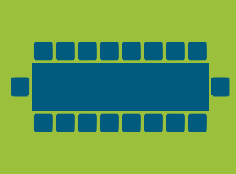
COCKTAIL

26



U-SHAPE

20



BOARDROOM

FACILITIES

SCHEDULE OF AREAS

Conference Hall
73m²

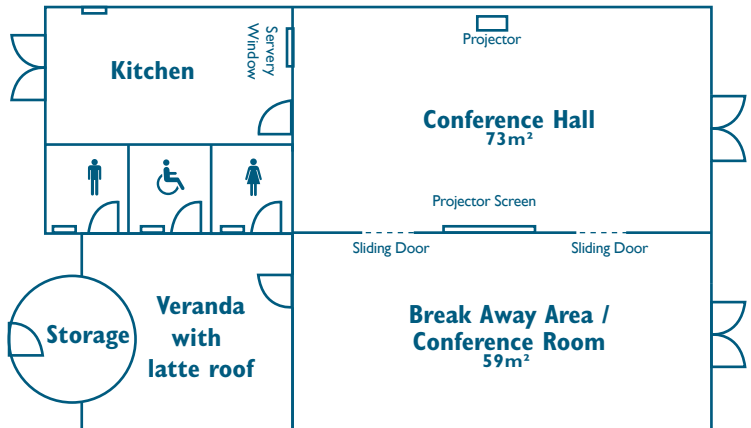
Break Away Area /
Conference Room
59m²

Ablutions 5m²

Storage 7m²

Kitchen 28m²

Total: 172m²



GOSHAWK ECO-VENUE

PURPOSE



MEETINGS



TALKS



EVENTS



TRAINING



EDUCATIONAL CAMPS

CAPACITY 30 

FACILITIES



COACH PARKING



HALL



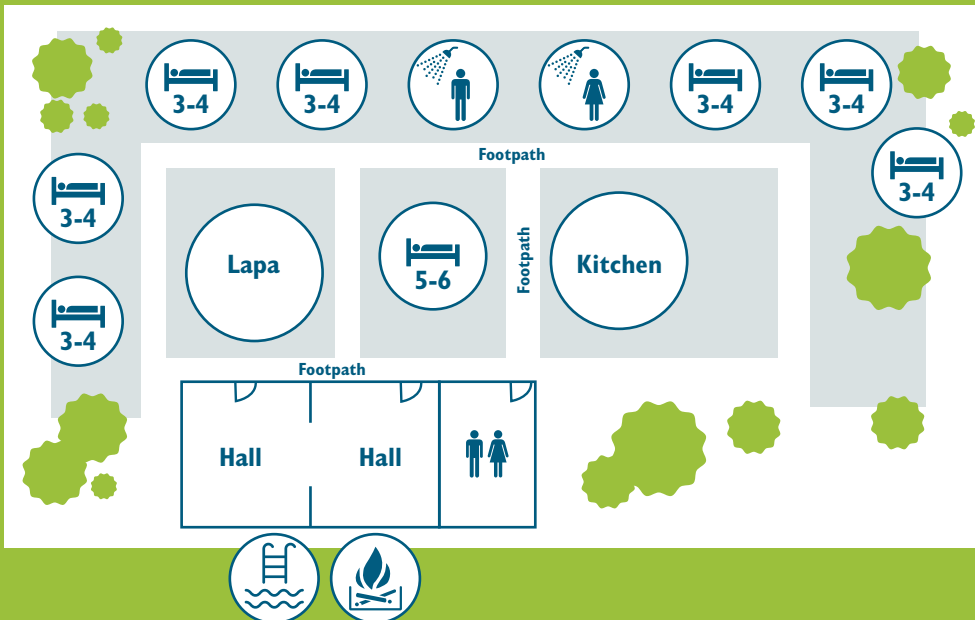
FULL SERVICE
[self-catering]



TABLEWARE
[on request]



UNDERCOVER
BRAAI PLACE



ACCOMMODATION

RESERVATIONS



087 087 8250

www.capenature.co.za



RONDAWELS

AT GOSHAWK ECO-VENUE

CAPACITY

30 

7X RONDAWELS | SLEEP 3-4

1X RONDAWEL | SLEEPS 5-6

Guests make use of the communal kitchen and ablution facilities



BEDS + MATTRESSES



LADIES
[communal]



GENTS
[communal]



COMMUNAL



COTTAGES ON RESERVE

CAPACITY

40 

x5

Luiperd | Rooikat | Bakoovos | Silwervos | Ichelesi

4 - BEDROOMED | SLEEP 8

2 bedrooms: DOUBLE BED

2 bedrooms: 2x SINGLE BEDS



POOL
[Ichelesi only]



WOOD FIRED HOT TUB
[All units]



BEDDING + TOWELS



FIREPLACE



FULL SERVICE
[self-catering]



LOUNGE



BRAAI

CHECKLIST : WHAT TO BRING

ALWAYS BRING THESE ITEMS



BOOKING CONFIRMATION

This is your entry permit



SIGNED INDEMNITY FORMS



FOOD + DRINKS
(no shop on the reserve)



ECO-LOGS



**MATCHES
+ FIRELIGHTERS**



CHARCOAL



**MOSQUITO
REPELLENT**



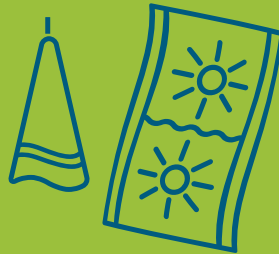
**FIELD
MEDICAL KIT**



**WATER
BOTTLE**



**DISHWASHING
LIQUID**



TOWELS



SWIMMING COSTUME
(Cottage guests only)



WALKING SHOES



SUN HAT



SUNSCREEN

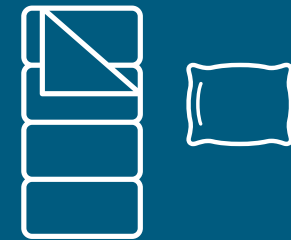


WARM JACKET/RAINCOAT
(Winter)

ALSO BRING THESE ITEMS IF
STAYING OVERNIGHT AT THE
GOSHAWK ECO-VENUE



PLATE, MUG, CUTLERY
(unless requested directly from the
reserve, prior to arrival)



SLEEPING BAG + PILLOW



TOILETRIES



PEN + NOTEBOOK



TORCH

ECO-PROGRAMMES

AVAILABLE ON REQUEST

Our approach to environmental education is based on active participation where learners are encouraged to learn about the environment through

discovery | questioning | problem solving | critical thinking



ENVIRONMENTAL EDUCATION PROGRAMMES

- Available for groups at the Goshawk Eco-Venue
- Curriculum aligned programmes available on request
- Must be pre-arranged and booked prior to arrival
- Can be self-guided or facilitated

FACILITATED

- Programme run by CapeNature
- Monday to Thursday (Subject to availability)

SELF-GUIDED

- Programme run by group organiser
- 7 days a week (Subject to availability)
- a recommended programme can be provided

EDUCATIONAL NATURE TALKS

(An interesting talk on an environmental topic)

- Duration \pm 1 hour
- Available Monday to Friday, subject to availability
- No cost, but must be booked prior to arrival with the CapeNature Contact Centre: Tel 087 087 8250



GROUPS NEED TO PROVIDE OWN TRANSPORT TO AND FROM ALL ACTIVITIES

ACTIVITIES

SELF - FACILITATED



DAY WALKS

- Heron Trail | 3km | easy | \pm 1 hour
- Rooikat Trail | 19km | strenuous | 7-8 hours
- Agama Trail | 10km | easy | 2-3 hours
- Braille Trail (for visually impaired visitors) 1km | information in Braille along the route



NO WATER ALONG ALL THE TRAILS.
CARRY 2+ LITRES OF WATER PER PERSON WITH YOU



SWIMMING

- 2x communal swimming pools



MOUNTAIN BIKING

(BRING YOUR OWN BIKE)

- 8km cycle trail through a section of the reserve (\pm 1 hour)



BIRD WATCHING

- 1x Bird hide located at the Lower dam
- 1x bird hide located at the upper dam with Universal Access



PUTT PUTT COURSE (COTTAGE GUESTS ONLY)



TENNIS COURT (COTTAGE GUESTS ONLY)

VROLIJKHEID & ECO-VENUES RULES

THE FOLLOWING ARE PROHIBITED



PICKING PLANTS



PETS



FIREARMS



After
22h00



DISTURBING OF
ANY WILDLIFE



HORSERIDING



LITTERING



FEEDING OF ANY
ANIMALS



THROWING CIGARETTE
BUTTS INTO THE VELD



TAKING FURNITURE,
EQUIPMENT OR UTENSILS
OUT OF THE CABIN



DAY VISITORS IN
THE UNITS



NO FIRES EXCEPT IN
DESIGNATED AREAS



DEPOSIT FOR BREAKAGES ON
CUTLERY & CROCKERY WILL BE
REFUNDED THE DAY AFTER THE
EVENT SHOULD THERE BE NO
BREAKAGES ETC



FOLLOW THE DO'S & DOT'S
FOR WOOD FIRED HOT TUBS

IF ANY VISITORS/ OR GUEST
SPEAKERS ARE PART OF THE
PROGRAMME RESERVE TO
BE INFORMED TIMEOUSLY
ESPECIALLY AFTER HOURS.

ARRIVAL & DEPARTURE

ARRIVAL:
14h00 - 16h00



THIS IS YOUR
ENTRY PERMIT



RETURN ALL KEYS TO THE
OFFICE ON DEPARTURE

WEEKENDS: PLEASE DROP KEYS
IN THE BROWN KEY BIN
AT THE ENTRANCE GATE

On the day of departure overnight visitors must
check out of their accommodation by 10h00 .

In the event of an emergency,
contact the Officer on Duty on
+27 (0)82 532 6256 or
+27 (0)82 496 2448.



FOLLOW US ON SOCIAL MEDIA



CapeNature |

@capenature |

/capenature |

@capenature