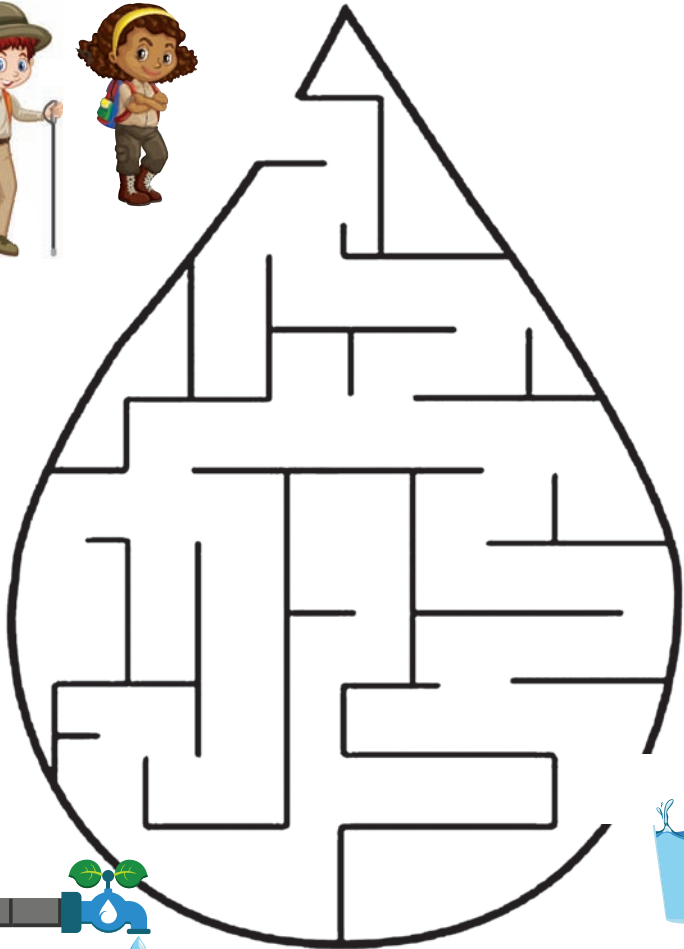


FIND YOUR WAY THROUGH THE MAZE

Help the thirsty hikers find their way through the maze.



FOLLOW US ON SOCIAL MEDIA



/capenature1



@capenature1



@capenature



Capenature1

www.capenature.co.za

PRECIOUS WATER



ACTIVITY BOOK

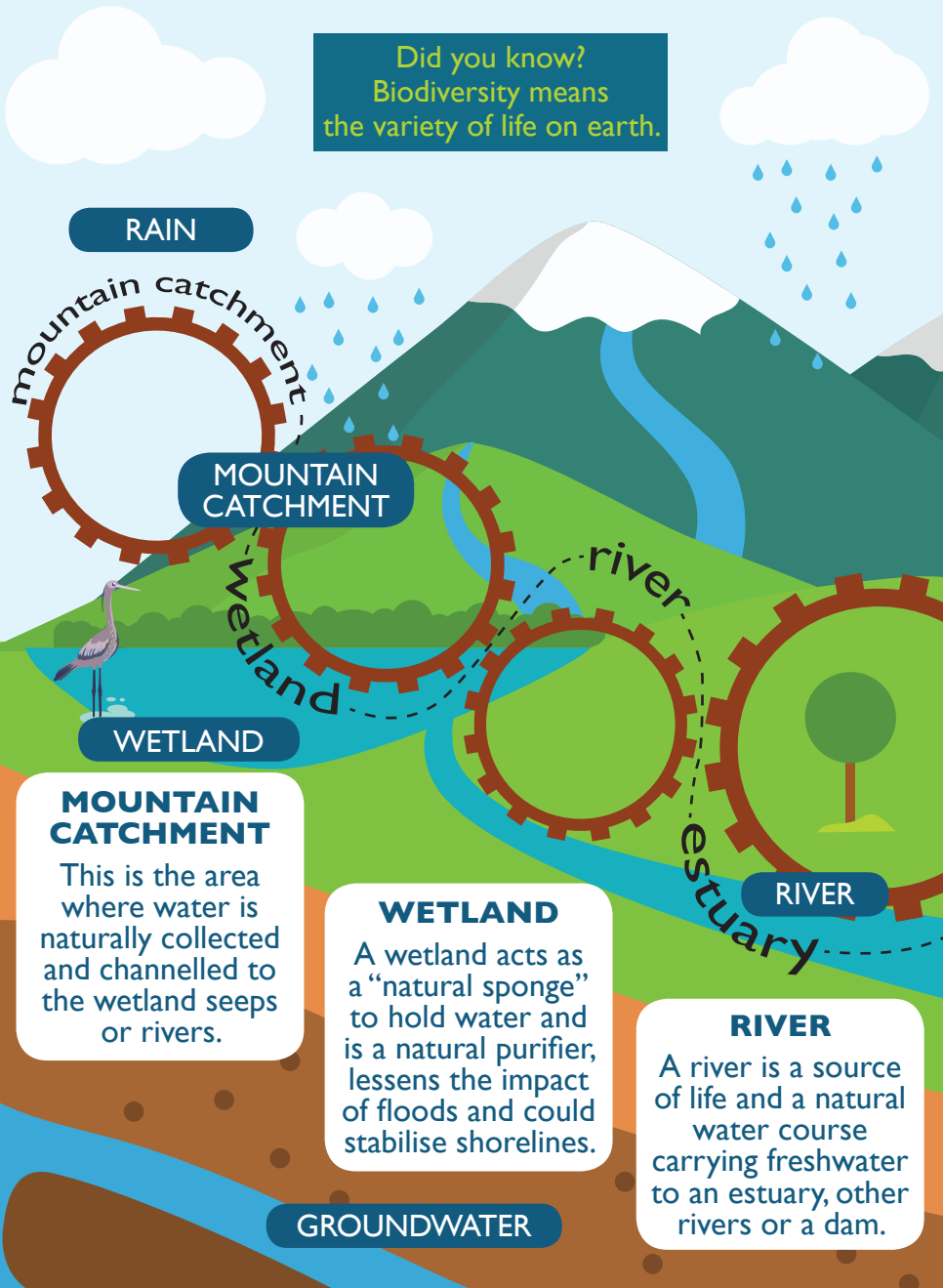
SUITABLE FOR AGES 7 -10



CapeNature

NATURE'S WATER FACTORY

Did you know?
Biodiversity means
the variety of life on earth.



RAIN

MOUNTAIN CATCHMENT

WETLAND

MOUNTAIN CATCHMENT

This is the area where water is naturally collected and channelled to the wetland seeps or rivers.

WETLAND

A wetland acts as a "natural sponge" to hold water and is a natural purifier, lessens the impact of floods and could stabilise shorelines.

RIVER

RIVER

A river is a source of life and a natural water course carrying freshwater to an estuary, other rivers or a dam.

GROUNDWATER

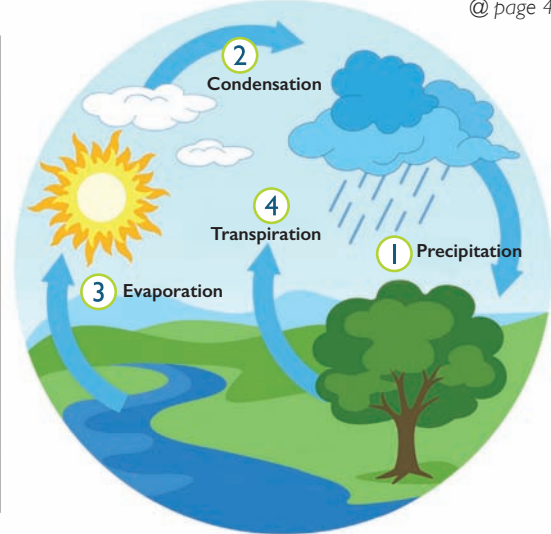
SOLUTIONS

@ page 10

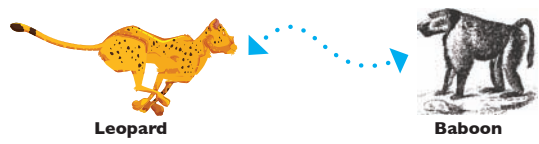
w	r	t	o	a	d	m
s	a	q	k	j	h	c
u	i	t	s	w	i	l
h	n	r	e	t	p	o
f	w	i	f	r	p	u
r	t	v	i	d	o	d
o	g	e	s	v	a	s
g	p	r	h	b	x	m

- Water River Fish
- Rain Dam Hippo
- Clouds Toad Frog

@ page 4

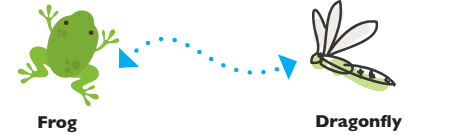
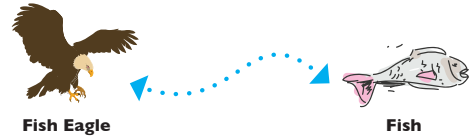


@ page 12



@ page 13

- 1. epts pets 6. etawr edngra water garden
- 2. nlace clean 7. ufhl s ettiol flush toilet
- 3. ikrdn drink 8. msiw swim
- 4. okoc cook 9. hbta bath
- 5. ahws wash 10. orswhe shower



SOLUTIONS

@ page 7



Shower rather than bath.



Washing too much.



Splash when swimming.



Set a timer when showering.



Close tap when you brush your teeth.



Leave tap running.



Fill up a bath.



Use a hose to wash car.



Reuse water when possible.



Water garden with sprinkler.



@ page 8 & 9

NATURE'S WATER FACTORY

Nature works like a factory to provide us with clean, fresh water and things like food and air. Each natural element in this "water factory" needs to work properly to ensure that production is flowing. If one of the elements is damaged or is not working properly, the whole factory can come to a halt and stop producing water. The conservation of our biodiversity and natural resources from the mountain catchment area to the sea is important, not only for our quality of life, but also for our survival as a species.



OCEAN

The warmth of the sun causes water to evaporate and lets the cycle of the water factory continue. The ocean is a safe haven and breeding area for many marine plants and animals.

OCEAN

ESTUARY

This is a very special part of the water factory as this is where fresh water from the river meets the salt water from the sea. Estuaries are a special nursery for many fish species and home to many bird species.

ESTUARY

THE WATER CYCLE

Match the right numbers to the picture.



1 Precipitation (when water falls from the sky e.g rain, hail, snow)

2 Condensation (water in the air changes to liquid)

3 Evaporation (liquid changes to a gas)

4 Transpiration (plants give off water through leaves)

WHAT DO WE USE WATER FOR?

The letters of the words are jumbled.
Figure out what the word is and write it on the blank line provided.

- | | |
|----------------|-----------------------|
| 1. epts _____ | 6. etawr edngra _____ |
| 2. nlace _____ | 7. ufhls ettiol _____ |
| 3. ikrdn _____ | 8. msiw _____ |
| 4. okoc _____ | 9. hbta _____ |
| 5. ahws _____ | 10. orswhe _____ |

flush toilet



clean



cook



swim



drink



water garden



shower



wash



pets



bath



WHAT'S FOR LUNCH?

Match each animal on the left with the food it would eat on the right.



Leopard



Worm



Fish Eagle



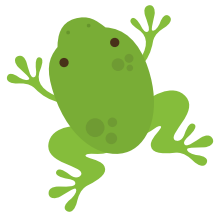
Dragonfly



Terrapin



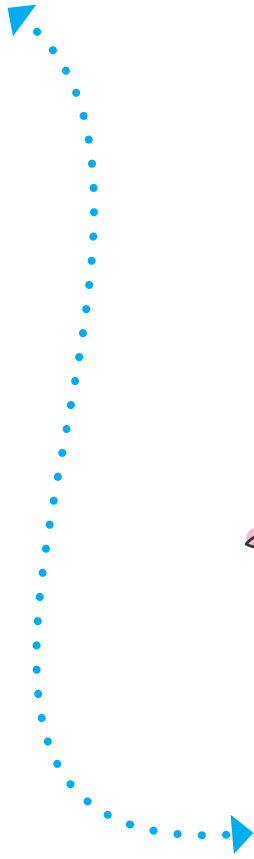
Fish



Frog



Baboon



WRITE A STORY ABOUT THE PICTURE

.....

.....

.....

.....

.....

.....

.....

.....

.....

.....



#LoveNature

TIP: you may find some animals eat more than one type of food

GOOD SAVING TIPS



Avoid wasting running water.



Water plants during the coolest part of day with a water can.



Clean driveways and sidewalks with a broom instead of hose.



Find and repair leaks.



Take a quick shower.



Put a brick in toilet cistern.



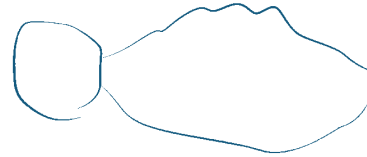
Use cup to brush teeth.



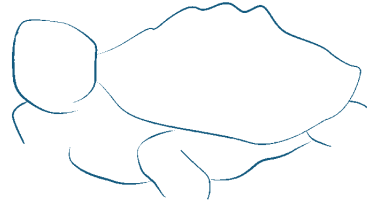
STEP BY STEP

Can you draw a terrapin?

1.



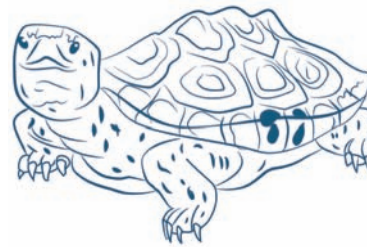
2.



3.



4.



**Did you know that a terrapin lives in fresh water?
A tortoise lives on land and a turtle lives in sea water.**

WORD SEARCH

Can you find the words below?

w	r	t	o	a	d	m
s	a	q	k	j	h	c
u	i	t	s	w	i	l
h	n	r	e	t	p	o
f	w	i	f	r	p	u
r	t	v	i	d	o	d
o	g	e	s	v	a	s
g	p	r	h	b	x	m

Check (tick) box

Water	<input type="checkbox"/>
-------	--------------------------

River	<input type="checkbox"/>
-------	--------------------------

Fish	<input type="checkbox"/>
------	--------------------------

Rain	<input type="checkbox"/>
------	--------------------------

Dam	<input type="checkbox"/>
-----	--------------------------

Hippo	<input type="checkbox"/>
-------	--------------------------

Clouds	<input type="checkbox"/>
--------	--------------------------

Toad	<input type="checkbox"/>
------	--------------------------

Frog	<input type="checkbox"/>
------	--------------------------

✓ TICK GOOD HABITS ✗ CROSS BAD HABITS

Shower rather than bath.

Splash when swimming.

Set a timer when showering.

Washing too much.

Fill up a bath.

Leave tap running.

Close tap when you brush your teeth.

Use a hose to wash car.

Reuse water when possible.

Water garden with sprinkler.

WONDERFUL WETLANDS

A wetland habitat with plants and animals.



PICTURE FIND

Can you find the listed items?

-  Bulrush plant
-  Fish
-  Ostrich
-  Hippo
-  Dragonfly
-  Frog
-  Kingfisher
-  Otter
-  Snipe
-  Pelican
-  Jackal
-  Footprint
-  Baboon
-  Eagle
-  Zebra
-  Water lilies